



FINDING THE  
**ONE**

JUST GOT A LOT  
**EASIER**

SEPTEMBER 9, 2017

*Old Red Angus Sale* **POWER OF RED III**

**OFFERING 40 BULLS**

**10 FEMALES • 20 GENETIC LOTS**

**HEADINGLY SALE COMPLEX, CLIFTON**

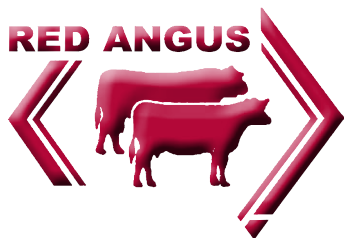


# Landmark Toowoomba

**We have you covered in  
South East Queensland**

For the largest range of rural merchandise and fertiliser along with all your insurance, real estate, farm services, livestock and wool requirements talk to Landmark Toowoomba

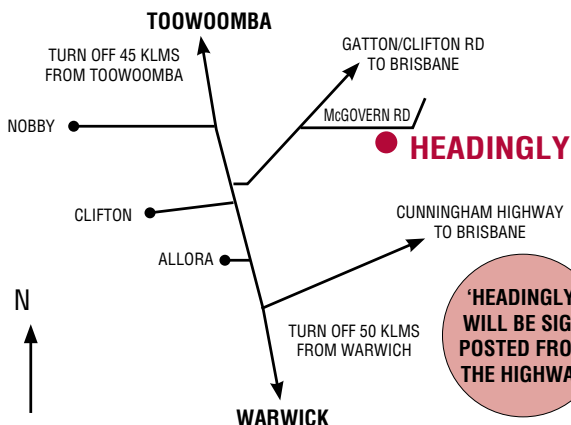
<b>Landmark Toowoomba</b>	
388 Taylor Street	<b>07 4637 3000</b>
<b>Branch Manager</b>	
Guy Pitman	<b>0428 740 151</b>
<b>Merchandise Manager</b>	
Rob Wiemers	<b>07 4637 3001</b>
<b>Livestock</b>	
Simon Booth	<b>0438 756 245</b>
Andrew Costello	<b>0429 485 191</b>
Jenny Radke	<b>07 4637 3000</b>
<b>Insurance</b>	
Lynelle Pitman	<b>0439 880 177</b>
<b>Stud Stock</b>	
Colby Ede	<b>0417 265 980</b>
<b>Finance</b>	
Robert Moncrieff	<b>0408 296 952</b>



# QUEENSLAND RED ANGUS **POWER OF RED SALE**

**40 Bulls, 10 Females and  
20 Genetic Packages  
Headingly Sale Complex  
Clifton Qld**

**11am — Saturday  
9 SEPTEMBER 2017**



Contact:

Craig Gapes 0418 639 847 • Maryanne Kearney 0458 645 574

Email: [gklivestock@bigpond.com](mailto:gklivestock@bigpond.com)

# VENDOR LIST

- 1. Boonyouin Reds**  
M. L. Kearney  
KINGAROY Q 4610  
0458 645574  
boonyouinreds@gmail.com  
www.boonyouin.com  
Selling Lots 8-9, 27-30, 48-49
- 2. Clearview Red Angus**  
G & M Hoey  
ALLORA Q 4362  
0438 460 156  
clearviewcvr@hotmail.com  
Selling Lots 20-23, 34-36, 69
- 3. Crooble Red Angus**  
MOREE NSW 2400  
02 6754 0284  
crooblepastoralco@bigpond.com  
Selling Lot 68
- 4. GK Livestock**  
G & K Iseppi  
DALBY Q 4405  
0427 790 652  
gklivestock@bigpond.com  
www.gklivestock.com  
Selling Lots 4-6, 37-40, 45-47,  
51, 57-62
- 5. Greenwood Park Red Angus**  
GWF Investments Pty Ltd  
Pittsworth Q 4356  
0429 903 010  
greenwoodparkred@skymesh.com.au  
www.greenwoodparkred.com.au  
Selling Lots 1-3, 10-14, 24-26,  
41, 44, 50B, 55-56
- 6. Holly Vale Red Angus**  
A Uebergang  
MOREE NSW 2400  
02 6754 0284  
crooblepastoralco@bigpond.com  
Selling Lots 15-16
- 7. Rosemullion Red Angus**  
H. Davies  
GOOMBURRA Q 4362  
4666 6209  
heather.davies@rosemullion.com.au  
www.rosemullion.com  
Selling Lots 7, 31-33, 42-43
- 8. Triple M Red Angus**  
C & R Gapes  
RUKENVALE NSW 2474  
02 6636 4111  
triplem@rukenvale.com.au  
Selling Lots 17-19, 50A, 52-54,  
63-67



**Agent - Landmark Toowoomba**  
**Phone - 07 4637 3000 Fax - 07 4637 3022**

**Andrew Costello 0429 485 191**  
**Simon Booth 0438 756 245**  
**Colby Ede 0417 265 980**

# SALE INFORMATION

## INSPECTIONS

Sale time is 11am and inspections can be made from 8am on sale day. We will also be at the sale complex the day before, if you would like to inspect Friday afternoon after 3pm.

## OUTSIDE AGENT REBATE

3% rebate will be paid to all agents introducing clients that purchase. A written introduction must be received by the vendor 24 hours prior to the sale and accounts to be settled within 7 days of sale date.

## REFRESHMENTS

A canteen will be operating at the venue on sale day.

## SALE DAY SAFETY

While we are confident that the cattle offered for sale are quiet and used to being handled, sale day brings a different set of conditions and even the quietest animals can misbehave. Visitors entering sale pens do so at their own risk. If you are limited in your mobility or have small children with you, please do not enter the pens.

## ELITE LIVESTOCK AUCTIONS

This year, we are pleased to make available live video, live audio and live online bidding through Elite Livestock Auctions which allows buyers to participate without attending the sale. Online buyers can log in, watch & listen to the Auction in real time and place bids via your computer, iPad or smartphone. The process is user friendly and easy to navigate. Simply log onto [www.elitelivestockauctions.com.au](http://www.elitelivestockauctions.com.au) and Register to Bid. **We recommend you register early with Elite Livestock Auctions** prior to the Sale to familiarise yourself with bidding procedures in this format and please be sure to Request to Bid on the Power of Red Auction to receive real time notifications and bid online as well as view the pre-recorded and live Cattle Cam video. On Sale day simply login, click "Enter Auction" on the catalogue page and you can start bidding. Elite Livestock Auctions friendly staff are available to help you with your registration, please call 1300 15 31 35 or email [chrisnorris@elitelivestockauctions.com.au](mailto:chrisnorris@elitelivestockauctions.com.au)

## MOBILE PHONES

Mobile phones work at the Headingly Sale Complex. Landmark will have agents available to take your bid if you are unable to attend. Please make arrangements prior to sale day - Colby Ede 0417 265 980, Andrew Costello 0429 485 191 or Simon Booth 0438 756 245.

## REGISTRATION

All cattle are sold as herd book registered and are eligible for transfer at the vendor's expense. Please advise transfer details on the Landmark Buyers Instruction sheet.

## BREEDING SOUNDNESS

All bulls will have passed a Bull Breeding Soundness Evaluation conducted by a qualified technician. All females have been inspected by a vet to confirm pregnancy status & breeding ability if unjoined. All details will be available prior to sale day, via the Supplementary Sheet. Warranties as per the ALPA terms & conditions displayed in this catalogue.

## SUPPLEMENTARY INFORMATION

Bull weights, Scans & Semen results will be available as a Supplementary Sheet after 2pm Friday 8 September and will be uploaded to the Elite Livestock Auctions page as well.

## INSURANCE

Ownership passes at the fall of the hammer. Insurance can be arranged on the day through Landmark.

## TRANSPORT







All Cattle must be removed from the Headingly sale complex by Saturday afternoon. Transport & holding yard alternatives will be available. Please co-ordinate with Landmark. No cattle will be loaded before completion of sale.

**Shipping and handling costs of the Embryo and Semen (genetic) lots will be the buyers expense.**

# HOW TO REGISTER with ELITE LIVESTOCK AUCTIONS



Welcome to the new age of  
selling livestock in Australia and  
“Happy Bidding”

-  Simply go to [www.elitelivestockauctions.com.au](http://www.elitelivestockauctions.com.au) using your desktop, laptop, iPad, iPhone or android device
-  Click on the “Sign Up” page / link
-  Create a bidding profile using the bidder registration page.  
*(You can either register as a livestock agent, company or private buyer.)*
-  Agree to the Elite Livestock Auctions Terms & Conditions and the Selling Agents Sale Terms & Conditions as printed in the official Sale Catalogue
-  Click “Register”
-  You will then be notified by email that an account has been created

-  Once an account has been created you are all “Set to Bid”
-  Each auction can then be viewed by clicking “Live Auction” logo on the Elite Livestock Auctions website
-  Once you receive email notification that your account has been created please go to the sale you wish to bid at and click “Request to Bid”
-  The sale agents will then approve your application to bid and on the sale catalogue you will see “**✓ Bid Request Approved**”
-  On Sale day simply login, click “Enter Auction” on the catalogue page and you can start bidding.  
*(There is no need for software download)*
-  At the completion of the auction, invoicing will be carried out as per your registration details by the Selling Agents.

Having trouble registering and logging in?  
**Contact Elite Livestock Auctions 1300 15 31 35**

**Elite Livestock Auctions**  
ABN 19 604 627 607  
📍 340 Curtin Avenue West,  
Eagle Farm QLD 4009

📞 **1300 15 31 35**  
📠 **07 3041 5053**  
🌐 [www.elitelivestockauctions.com.au](http://www.elitelivestockauctions.com.au)

# BREEDPLAN

## EXPLANATORY NOTE

Red Angus GROUP BREEDPLAN EBVs cannot be validly compared to the GROUP BREEDPLAN EBVs for other breeds (including Angus).

**Estimated Breeding Values (EBVs):** An Estimated Breeding Value EBV is an estimate of the genetic value of that particular animal for each trait measured.

**Accuracy:** Accuracy is presented with every EBV and gives an indication of the amount of information that has been used in the calculation of that EBV. The higher the accuracy the lower the likelihood of change in the animal's EBV as more information is analysed for that animal or it's relatives. Accuracy below 75% should be considered low.

**Birth: BWT:** Birth Weight EBV (kg) is based on the measured birth weight of animals, adjusted for dam age. The lower the value the lighter the calf at birth and the lower the likelihood of a difficult birth. This is particularly important when selecting sires for use over heifers.

**Fertility: SS:** Scrotal Size EBV (cm) is an indicator of male fertility in regards to semen quality and quantity. Higher (positive) EBVs indicate larger scrotal size. SS is also positively associated with female fertility.

**Growth: Milk:** 200-Day Milk EBV (kg) is an estimate of an animal's milking ability. For sires, this EBV is indicative of their daughter's milking ability as it affects the 200 and 400 day weight of their calves.

**200-Day Growth EBV (kg)** is calculated from the weight of animals taken between 80 and 300 days of age. Values are adjusted to 200 days and for age of dam. This EBV is the best single estimate of an animal's genetic merit for growth to early ages.

**400-Day Weight EBV (kg)** is calculated from the weight of progeny taken between 301 and 500 days of age, adjusted to 400 days and for age of dam. This EBV is the best single estimate of an animal's genetic merit for yearling weight.

**600-Day Weight EBV (kg)** is calculated from the weight of progeny taken between 501 and 900 days of age, adjusted to 600 days and for age of dam. This EBV is the best single estimate of an animal's genetic merit for growth beyond yearling age.

**MWT:** Mature Cow Weight EBV (kg) is an estimate of the genetic difference in cow weight at 5 years of age. Moderate EBVs are generally more favourable.

**Carcase: CWT:** Carcase Weight EBV (kg) estimates the genetic difference in carcase weight at a standard age of 650 days.

**EMA:** Eye Muscle Area EBV (cm<sup>2</sup>) estimates genetic differences in eye muscle area at the 12/13th-rib site of a 300kg-dressed carcase. More positive EBVs indicate larger eye muscle area and therefore higher retail beef yields.

**RIB:** Rib Fat EBV (mm) estimates the genetic differences in fat depth at the 12/13th rib in a 300kg dressed carcase. More positive EBVs indicate more subcutaneous fat and earlier maturity.

**RUMP:** Rump Fat EBV (mm) estimates the genetic differences in fat depth at the P8 site of a 300kg dressed carcase. More positive EBVs indicate more subcutaneous fat and earlier maturity.

**RBV%:** Retail Beef Yield Percent EBV (%) represents total (boned out) meat yield as a percentage of a 300kg dressed carcase. A more positive EBV indicates higher percentage yield for the 300kg carcase weight.

**IMF%:** Intra-muscular Fat Percent EBV (%) is an estimate of the genetic difference in the percentage of intra-muscular fat at the 12/13th-rib site in a 300kg carcase. For some markets, larger more positive values are more favorable.

Table 1: Average EBVs for the 2013 born animals analysed in the 2015 May Red Angus GROUP BREEDPLAN

INDEXES			BL	BA	200	RIB	SS	MCH	HLB	SL	200	EMA	RIB	RMP	RBV	IMF
RAV	YGR	HTH	(2V)													
				-0.7	+3.6	+15	+87	+51	+53	+10	+0.8	+0.2	+1.1	+0.2	+0.3	-0.1

## INTRODUCTION

Welcome Red Angus enthusiasts and breeders to the third annual Power of Red Sale. This year our seven vendors are very proud to be offering an impressive line of 40 bulls that have been bred for the Queensland environment. They are also presenting 10 quality females and numerous genetic lots to build your herd around. Please do not hesitate to contact any of the vendors if you require any further information on individuals or vendor runs. We look forward to seeing you all on sale day.

*Regards, Kirrily Iseppi (Power of Red Sale Group)*



*Power of Red Sale Committee: Maryanne Kearney, Kirrily Iseppi, Craig Gapes, Stu Greenwood and Colby Ede.*

## 2016 POWER OF RED SALE RESULTS

The vendors would like to thank the Buyers and Underbidders who supported the 2<sup>nd</sup> Annual Power of Red Sale in September last year.

Red Angus Bulls averaged \$6,652 and topped at \$16,000 for Lot 6.

Cow/calf units averaged \$7,500 and topped at \$10,000 for Lot 34.

Heifers averaged \$2,980 and topped at \$4,000 for an overall 100% clearance.

Top Price bull at \$16,000 was Lot 6 GK Red Kulcha Shoc K23 offered by GK Livestock. K23 was purchased by Kay and Michael O'Neill, Cinnabar, Qld

Purchaser of the top price female in the Power of Red II Sale was new Red Angus member Andrew Youngberry T/A Country Heritage Trust of Pittsworth who purchased Lot 34: GK Red Dina 26 J19 & her bull calf at side for \$10,000 from GK Livestock, Dalby. The Country Heritage Trust was the volume female buyer today, putting together a line of nine females for an average of \$3,722.

*Volume female buyer Andrew Youngberry pictured with two of his grandsons and Gavin Iseppi, vendor of the top selling female.*



*Purchaser Michael O'Neill and vendor Gavin Iseppi with the top priced bull GK Red Kulcha Shoc K23.*





# BULLS

1

GREENWOOD PARK LEOPOLD (AI) GWPL80

BORN: 03/12/2015

TATTOO: GWPL80

AGE: 21 months

Vendor: GWF Investments Pty Ltd

RED SVR KNIGHT 236T

SIRE: RED SSS SOLDIER 365W (AMF) (MAF) (NHF) (OSF) CANM1533473

RED SSS BELLE 342S

RED NORTHLINE IGNITION 125W (MAF) (OSF)

DAM: DONNA-LYNN RED CHERRY J8 (AI) 1YNJ8

IBR RED CHERRY Y649

	GL	BW	200	400	600	MCW	MILK
EBV	+0.7	+3.3	+26	+39	+55	+42	
Acc	56%	71%	56%	47%	48%	33%	
	SS	CW	EMA	RIB	Rump	RBV	IMF
		+34					
		25%					

Treatments	
3 day	✓
7 in 1	✓
Tick Fever	✓



Notes:

Eye-catching SSS Soldier son with a super topline, width and depth. L80 is the first calf out of J8, a daughter of our breed matriarch IBR Red Cherry Y649, who has 30 registered progeny. Champion British bull at Farmfest and Supreme Champion Goombungee Show.

Purchaser.....

Price \$.....

July 2017 Red Angus GROUP BREEDPLAN: EBV AVG: GL -0.6 BW +2.8 200 +26 400 +40 600 +54									
MCW +53 MK +11 SS +0.9 EMA +1.2 RIB -0.2 RUMP -0.5 RBV +0.6 IMF -0.1									

GREENWOOD PARK LORENZO (AI) GWPL76

**BORN:** 11/09/2015

**TATTOO:** GWPL76

**AGE:** 23 months

**Vendor:** GWF Investments Pty Ltd

RED SSS SOLDIER 365W (AMF) (MAF) (NHF) (OSF)  
**SIRE: RED LAZY MC TROOPER 21Y (AMF) (MAF) (NHF) (OSF) CANM1639504**  
LAZY MC EXPRESS 60W (BLACK RC)

RED NORTHLINE FAT TONY 605U (AMF) (MAF) (OSF)  
**DAM: DONNA-LYNN RED CHERRY J6 (AI) 1YNJ6**  
DONNA-LYNN RED CHERRY A10 (AI)

	GL	BW	200	400	600	MCW	MILK
EBV	-1.6	+1.4	+22	+35	+50	+33	
Acc	60%	73%	58%	51%	51%	36%	
	SS	CW	EMA	RIB	Rump	RBV	IMF
		+33					
		30%					

Treatments	
3 day	✓
7 in 1	✓
Tick Fever	



**Notes:**  
Long, super wide and excellent muscle in this showy bull by Lazy MC Trooper, the 2014 US National Champion Red Angus bull. A first calf son to another Red Cherry cow who again goes back to the prodigious IBR Red Cherry cow.

Purchaser.....Price \$.....

July 2017 Red Angus GROUP BREEDPLAN: EBV AVG: GL -0.6 BW +2.8 200 +26 400 +40 600 +54 MCW +53 MK +11 SS +0.9 EMA +1.2 RIB -0.2 RUMP -0.5 RBV +0.6 IMF-0.1									
--	--	--	--	--	--	--	--	--	--

GREENWOOD PARK LANCELOT (ET) GWPL69

**BORN:** 14/09/2015

**TATTOO:** GWPL69

**AGE:** 23 months

**Vendor:** GWF Investments Pty Ltd

RED TER-RON RELOAD 703T (AMF) (MAF) (NHF) (OSF)

**SIRE: RED WILBAR LONGITUDE 646Y (AMF) (MAF) (NHF) (OSF) CANM1630113**  
RED WILBAR LANA 346N

RED BRYLOR STALLION 19J (MAF) (OSF)

**DAM: ROCKRIDGE R-STALLION BLAZE C54 (ET) (AI) MAXC54**  
RRA BLOOMERS (ET) (AI) (MAF)

	GL	BW	200	400	600	MCW	MILK
EBV	+0.0	+3.8	+26	+42	+54	+63	+7
Acc	43%	67%	53%	47%	48%	37%	31%
	SS	CW	EMA	RIB	Rump	RBV	IMF
		+32					
		32%					

Treatments	
3 day	✓
7 in 1	✓
Tick Fever	✓



Notes:

Quiet natured with outstanding length and depth, Lancelot is a later maturing bull who stood out as a youngster for his impressive scale & frame. He is sired by Red Wilbar Longitude 646Y who was undefeated in the 2013 Canadian show season and despite being awarded Canadian National Red Angus Champion Bull of 2013, Redrich Farms claim his best attribute is his offspring. We happily support that claim with some top-class Longitude progeny performing well at Greenwood Park. Longitude also sired the top priced bull at the Red Angus National Sale this year at \$21,000. We were fortunate to purchase Lance’s dam, Rockridge R-Stallion Blaze, at the IBR dispersal.

Purchaser.....Price \$.....

July 2017 Red Angus GROUP BREEDPLAN: EBV AVG: GL -0.6 BW +2.8 200 +26 400 +40 600 +54 MCW +53 MK +11 SS +0.9 EMA +1.2 RIB -0.2 RUMP -0.5 RBV +0.6 IMF -0.1									
---	--	--	--	--	--	--	--	--	--

GK RED 26 LAS VEGAS L24 (AI) GK L24

BORN: 02/11/2015                      TATTOO: GK L24                      AGE: 22 months  
Vendor:    G & K ISEPPI

RED COMPASS MULBERRY 449M  
SIRE: RED FINE LINE MULBERRY 26P (AMF) (MAF) (OSF) CANM1237972  
RED DUS FAYETTE 8G  
  
RED BRYLOR SDL PASQUALE 213P (MAF)  
DAM: GK 213 RED DINA H24 (AI) GK H24  
GK RED DINA 2T F27 (AI)

	GL	BW	200	400	600	MCW	MILK
EBV	+1.4	+4.3	+36	+62	+86	+87	+16
Acc	64%	63%	66%	61%	60%	51%	52%
	SS	CW	EMA	RIB	Rump	RBV	IMF
	+1.3	+59	+1.1	-0.7	-1.0	+1.0	+0.2
	39%	52%	39%	48%	48%	45%	44%

Treatments	
3 day	✓
7 in 1	✓
Tick Fever	✓
Pestiguard	✓



**Notes:**  
Las Vegas L24 is a powerful, long sided, beautiful natured Mulberry son with a heap of punch, performance and presence. L24 is out of a perfect uddered, high capacity Pasquale daughter from the consistent producing Dina Cow family. L24's figures place him in the top 1% of the breed for 400 and 600 day weight, Top 5% for 200 day weight and carcase weight and top 10% for Milk. Stud Sire prospect, Dual Herdbook registered with both the Red Angus and Angus Societies of Australia.

Purchaser.....Price \$.....

July 2017 Red Angus GROUP BREEDPLAN: EBV AVG: GL -0.6 BW +2.8 200 +26 400 +40 600 +54 MCW +53 MK +11 SS +0.9 EMA +1.2 RIB -0.2 RUMP -0.5 RBV +0.6 IMF-0.1									
--	--	--	--	--	--	--	--	--	--

GK 23 STREET LEGAL L16 (AI) GK L16

BORN: 05/10/2015

TATTOO: GK L16

AGE: 23 months

Vendor: G & K ISEPPI

RED FINE LINE MULBERRY 26P (AMF) (MAF) (OSF)  
SIRE: GK 26 FEDERER F23 (AI) (AMF) (MAF) (NHF) (OSF) GK F23  
IBR RED BELLA R512 (ET) (AI) (MAF)  
GK RED XPRESS X6 (AI)  
DAM: AMAROO PARK WHISPER 5TH (MAF) WAMA18  
IBR RED WHISPER N518 (ET) (AI) (MAF)

	GL	BW	200	400	600	MCW	MILK
EBV	+0.9	+3.5	+30	+40	+61	+66	+10
Acc	62%	60%	62%	60%	56%	43%	46%
	SS	CW	EMA	RIB	Rump	RBV	IMF
	+1.0	+38	+0.3	-1.2	-1.8	+1.1	-0.2
	28%	47%	27%	35%	34%	32%	31%

Treatments	
3 day	✓
7 in 1	✓
Tick Fever	✓
Pestiguard	✓



**Notes:**  
Street Legal is a growthy, extremely long bodied, slick coated son of Triple trait leader GK 26 Federer F23 and is out of the magnificent old Whisper A18 cow who is still breeding well in the GK herd at 11 years of age. L16 is in the top 20% of the breed for 200day weight on Group Breedplan (Herd book Registered Angus/Red Angus Societies).

Purchaser.....Price \$.....

July 2017 Red Angus GROUP BREEDPLAN: EBV AVG: GL -0.6 BW +2.8 200 +26 400 +40 600 +54 MCW +53 MK +11 SS +0.9 EMA +1.2 RIB -0.2 RUMP -0.5 RBV +0.6 IMF -0.1									
---	--	--	--	--	--	--	--	--	--

GK RED LIGHTS OUT L30 GK L30

**BORN:** 05/12/2015

**TATTOO:** GK L30

**AGE:** 21 months

**Vendor:** G & K ISEPPI

RED BADLANDS NET WORTH 23U (MAF) (OSF)

**SIRE:** GK RED 23U HOT SPIN H49 (ET) GK H49

RED BRYLOR ANNIE 240U (MAF)

RED FINE LINE MULBERRY 26P (AMF) (MAF) (OSF)

**DAM:** GK JUTLAND DINA 26 H35 (AI) GK H35

JUTLAND ELSIE (ET) (AI) (MAF)

	GL	BW	200	400	600	MCW	MILK
EBV	-0.3	+3.4	+29	+48	+61	+63	+10
Acc	35%	50%	55%	47%	46%	35%	31%
	SS	CW	EMA	RIB	Rump	RBV	IMF
		+41		+0.1	+0.0	+0.6	+0.3
		37%		31%	31%	29%	27%

Treatments	
3 day	✓
7 in 1	✓
Tick Fever	✓
Pestiguard	✓



**Notes:**  
Lights Out L30 is a younger December drop bull and the first son to sell by our outcross walking sire Hotspin H49. Hotspin is the only son of Red Badlands Networkorth in Australia. L30 is a maternal brother to our feature female today lot 40, GK Red Dina K33. His dam Dina H35 is a powerful Mulberry daughter. L30 is in the top 15% of the breed for 400 day weight and carcase weight and top 20% for IMF (marbling) on Group Breedplan.

Purchaser.....Price \$.....

July 2017 Red Angus GROUP BREEDPLAN: EBV AVG: GL -0.6 BW +2.8 200 +26 400 +40 600 +54 MCW +53 MK +11 SS +0.9 EMA +1.2 RIB -0.2 RUMP -0.5 RBV +0.6 IMF-0.1									
--	--	--	--	--	--	--	--	--	--

ROSEMULLION RED LIEUTENANT (AI) HMDL8

BORN: 29/09/2015                      TATTOO: HMDL8                      AGE: 23 months  
Vendor: ROSEMULLION RED ANGUS

RED SVR KNIGHT 236T  
SIRE: RED SSS SOLDIER 365W (AMF) (MAF) (NHF) (OSF) CANM1533473  
RED SSS BELLE 342S

TE MANIA RED LABEL Z1023 (ET) (AI) (AMF) (MAF) (NHF) (OSF)  
DAM: HICKS ROSEBUD G124 (AI) (NHF) (OSF) HRAG124  
HICKS ROSEBUD C513 (AI) (OSC)

	GL	BW	200	400	600	MCW	MILK
EBV	-1.0	+2.6	+28	+43	+58	+50	+18
Acc	49%	58%	50%	45%	46%	36%	31%
	SS	CW	EMA	RIB	Rump	RBV	IMF
	+0.6	+37		+0.2	+0.1	+0.1	+0.6
	27%	34%		27%	27%	26%	25%

Treatments	
3 day	
7 in 1	✓
Tick Fever	✓



**Notes:**  
A super thick, early maturing son of the very consistent producing SSS Soldier, displaying great muscling, softness and smoothness with EBVs in the top 5% for milk and top 15% for IMF. Dam is a top performer in the Rosemullion herd, by the trait leading sire Te Mania Red Label.

Purchaser.....Price \$.....

July 2017 Red Angus GROUP BREEDPLAN: EBV AVG: GL -0.6 BW +2.8 200 +26 400 +40 600 +54 MCW +53 MK +11 SS +0.9 EMA +1.2 RIB -0.2 RUMP -0.5 RBV +0.6 IMF-0.1									
--	--	--	--	--	--	--	--	--	--



BOONYOUIN LEGEND L21 MAKL21

BORN: 06/09/2015                      TATTOO: MAKL21                      AGE: 24 months  
Vendor:    MARYANNE KEARNEY

PARINGA RED ADA E12  
SIRE: IBR E12 HUDSON H112 (OSF) IBRH112  
             HICKS RED D674 (OSF)  
  
RED PIE GAME ON 9109 (AMF) (MAF) (NHF) (OSF)  
DAM: BOONYOUIN MITTAGONG J12 (ET) (AI) MAKJ12  
             STRATHEWEN 7127 MITTAGONG A18 (BLACK RC)

	GL	BW	200	400	600	MCW	MILK
EBV	-0.2	+5.5	+41	+60	+84	+82	+15
Acc	28%	50%	57%	60%	58%	48%	30%
	SS	CW	EMA	RIB	Rump	RBV	IMF
	+0.7	+52	+1.4	-0.5	-0.9	+0.7	+0.4
	39%	48%	26%	32%	32%	30%	26%

Treatments	
3 day	✓
7 in 1	✓
Tick Fever	✓



**Notes:**  
Stud sire prospect.  
Long, smooth, clean coated, powerful bull that would suit most breeding programs. His sire is an IBR bull from Hicks, Paringa & Te Mania bloodlines. His dam is an ET cow from the famous Mittagong family, who was shown as a yearling. Legend is top 2% for 200, 400 & 600 day EBVs, and top 10% for Milk & carcase weight. Joined to a handful of my best cows over summer, he will have calves on the ground by sale day.

Purchaser.....Price \$.....

July 2017 Red Angus GROUP BREEDPLAN: EBV AVG: GL -0.6 BW +2.8 200 +26 400 +40 600 +54 MCW +53 MK +11 SS +0.9 EMA +1.2 RIB -0.2 RUMP -0.5 RBV +0.6 IMF-0.1									
--	--	--	--	--	--	--	--	--	--



BOONYOUIN LEE HARVEY L33 MAKL33

BORN: 24/09/2015                      TATTOO: MAKL33                      AGE: 23 months  
Vendor:    MARYANNE KEARNEY

RED NORTHLINE FAT TONY 605U (AMF) (MAF) (OSF)  
SIRE: BOONYOUIN HIT MAN H7 (ET) (AI) (AMF) (MAF) (NHF) (OSF) MAKH7  
TREVONE PARK TRIX B2 (ET) (AI)  
  
DONNA-LYNN DOMINATOR (AMF) (MAF) (NHF) (OSF)  
DAM: BOONYOUIN MOLLY J33 MAKJ33  
BOONYOUIN MOLLY F3

	GL	BW	200	400	600	MCW	MILK
EBV	-0.1	+2.6	+23	+36	+48	+43	+11
Acc	29%	49%	59%	61%	58%	44%	32%
	SS	CW	EMA	RIB	Rump	RBV	IMF
	+0.6	+31		+0.1	+0.1	+0.7	
	26%	48%		27%	27%	25%	

Treatments	
3 day	✓
7 in 1	✓
Tick Fever	✓



**Notes:**  
Good feet & legs on this growthy meat machine, with muscle in all the right places. His dam is another good Dominator cow who has really performed in the Boonyouin herd and combined well with my Fat Tony stud sire to produce this bull.

Purchaser.....Price \$.....

July 2017 Red Angus GROUP BREEDPLAN: EBV AVG: GL -0.6 BW +2.8 200 +26 400 +40 600 +54 MCW +53 MK +11 SS +0.9 EMA +1.2 RIB -0.2 RUMP -0.5 RBV +0.6 IMF-0.1									
--	--	--	--	--	--	--	--	--	--

10

GREENWOOD PARK LOVER BOY (ET) (AI)

GWPL72

BORN: 14/09/2015

TATTOO: GWPL72

AGE: 23 months

Vendor: GWF INVESTMENTS PTY LTD

RED SVR KNIGHT 236T

SIRE: RED SSS SOLDIER 365W (AMF) (MAF) (NHF) (OSF) CANM1533473

RED SSS BELLE 342S

INVOCERA EBV A25 (AI)

DAM: INVOCERA WATTLE D2 IV D2

FERNDAL PARK WATTLE 2

	GL	BW	200	400	600	MCW	MILK
EBV	-0.7	+1.7	+23	+36	+47	+34	
Acc	44%	67%	52%	45%	46%	32%	
	SS	CW	EMA	RIB	Rump	RBV	IMF
		+31					
		26%					

Treatments	
3 day	✓
7 in 1	✓
Tick Fever	✓



Notes:

Another excellent easy-doing Soldier son here, showing a huge barrel and depth of carcase. He demonstrates the consistent high quality progeny from SSS Soldier. An ET son of our donor cow Wattle D2, who has produced some quality females as well.

Purchaser.....Price \$.....

July 2017 Red Angus GROUP BREEDPLAN: EBV AVG: GL -0.6 BW +2.8 200 +26 400 +40 600 +54 MCW +53 MK +11 SS +0.9 EMA +1.2 RIB -0.2 RUMP -0.5 RBV +0.6 IMF-0.1
---

11

GREENWOOD PARK LADDY (AI) GWPL66

BORN: 10/09/2015

TATTOO: GWPL66

AGE: 23 months

Vendor:   GWf Investments Pty Ltd

RED NORTHLINE FAT TONY 605U (AMF) (MAF) (OSF)

SIRE: RUBY RED FAT BOY (AI) (AMF) (MAF) (NHF) (OSF) RRRJ1

TRIPLE M SNOOPY E73 (ET) (AI)

RED DMM BRYLOR THUMP 2T (MAF) (OSF)

DAM: DONNA-LYNN DREAM GIRL J10 (ET) 1YNJ10

TREVONE PARK DREAM GIRL Z6 (AI)

	GL	BW	200	400	600	MCW	MILK
EBV	-1.2	+2.9	+24	+36	+54	+43	+13
Acc	54%	71%	55%	49%	50%	37%	29%
	SS	CW	EMA	RIB	Rump	RBV	IMF
	+0.7	+31		-0.4	-0.6	+1.0	
	27%	32%		26%	26%	25%	

Treatments	
3 day	✓
7 in 1	✓
Tick Fever	✓



Notes:

L66 is the first of 5 bulls by Ruby Red Fat Boy, a Fat Tony sire who was the high-selling bull at the 2015 RA National Sale. We used Fat Boy on our yearling ‘J’ heifers and were very impressed with his progeny – easy calving, good shape, easy- doing - as shown in this bull. His dam is a Thump cow, from the Trevone Park Dream Girl line. L66 is well grown, very deep and has that sire’s outlook. Overall an impressive bull.

Purchaser.....Price \$.....

July 2017 Red Angus GROUP BREEDPLAN: EBV AVG: GL -0.6 BW +2.8 200 +26 400 +40 600 +54 MCW +53 MK +11 SS +0.9 EMA +1.2 RIB -0.2 RUMP -0.5 RBV +0.6 IMF-0.1									
---	--	--	--	--	--	--	--	--	--

12

GREENWOOD PARK LEVI (AI) GWPL63

BORN: 10/09/2015

TATTOO: GWPL63

AGE: 23 months

Vendor:   GWf Investments Pty Ltd

RED NORTHLINE FAT TONY 605U (AMF) (MAF) (OSF)

SIRE: RUBY RED FAT BOY (AI) (AMF) (MAF) (NHF) (OSF) RRRJ1

TRIPLE M SNOOPY E73 (ET) (AI)

MESSMER PACKER S008 (MAF) (OSF)

DAM: IBR MP MISS DALLAS J2 (AI) IBRJ20

ROCKRIDGE NORSEMAN BLAZE G16 (AI)

	GL	BW	200	400	600	MCW	MILK
EBV	-1.4	+2.1	+22	+36	+47	+36	+12
Acc	52%	70%	56%	49%	50%	37%	28%
	SS	CW	EMA	RIB	Rump	RBY	IMF
	+1.0	+31		+0.1	-0.1	+0.8	+0.2
	29%	33%		28%	28%	26%	25%

Treatments	
3 day	✓
7 in 1	✓
Tick Fever	✓



**Notes:**  
Levi is a commercially focused bull and being from a maiden heifer the low birthweight attribute for which his grandsire Fat Tony is famous for is evident. No surprise that his dam, a young IBR cow has performed well in our herd, being by Messmer Packer, a popular USA carcase bull with 230 progeny in Australia.

Purchaser.....Price \$.....

July 2017 Red Angus GROUP BREEDPLAN: EBV AVG: GL -0.6 BW +2.8 200 +26 400 +40 600 +54 MCW +53 MK +11 SS +0.9 EMA +1.2 RIB -0.2 RUMP -0.5 RBY +0.6 IMF -0.1
--

13

GREENWOOD PARK LAZARUS (AI) GWPL77

BORN: 02/09/2015

TATTOO: GWPL77

AGE: 24 months

Vendor:   GWf Investments Pty Ltd

RED NORTHLINE FAT TONY 605U (AMF) (MAF) (OSF)

SIRE: RUBY RED FAT BOY (AI) (AMF) (MAF) (NHF) (OSF) RRRJ1

TRIPLE M SNOOPY E73 (ET) (AI)

DMM CREED 75W (BLACK RC) (AMF) (MAF) (NHF) (OSF)

DAM: T&R ROSE J8 (ET) TRHJ8

BST TULLATOOLA ROSE G68 (AI)

	GL	BW	200	400	600	MCW	MILK
EBV	-1.9	+3.8	+27	+40	+56	+45	
Acc	53%	71%	56%	50%	50%	36%	
	SS	CW	EMA	RIB	Rump	RBV	IMF
	+0.7	+30					
	26%	32%					

Treatments	
3 day	✓
7 in 1	✓
Tick Fever	✓



Notes:

Another Fat Boy bull who has excellent structure, smooth shoulders, plenty of muscle, sleek coat and walks out well. L77 is out of a top-quality cow, by Canadian bull DMM Creed, whose second calf Rose M39 is a stand-out. She sells as Lot 44 in this sale.

Purchaser.....Price \$.....



***Making Food  
Healthy Again***

## **Advantages of a Fodder Solutions Sprouting System**

- Reliable turnkey system
- Single phase power
- No wastage
- Reduced reliance on weather
- Small environment foot print
- Fully automated irrigation system
- Artificial lighting used to maximise growth
- Water efficient
- Climate controlled
- Low power consumption



- No growing medium
- Organic options
- Flexible output
- High quality grade components
- 365 days per year production

## **Benefits All Livestock**

- 1kg of seed yields 5kg of Fodder - costs a fraction of paddock grown fodder!
- **Beef** - Weight gain with less feed, great result for breeders, calves and weaners
- **Dairy** - Proven increased milk production, increased butterfat content and healthier animals
- **Equine** - Great results for breeders, proven observations in reducing health issues, improved digestion systems, increased hydration and reduced reliance on expensive prime lucerne

- **Sheep & Goats** - Improved milk yields and fleece appearance, fewer herd health problems and improved conception rates. Also feeds pigs, chickens, alpacas, ducks, camels and more.



 **5646 5949**

11 William Banks Drive, Burleigh Heads, Qld 4220  
[sales@foddersolutions.com.au](mailto:sales@foddersolutions.com.au)

**[www.foddersolutions.com.au](http://www.foddersolutions.com.au)**

14

GREENWOOD PARK LANZA (AI) GWPL71

BORN: 16/09/2015TATTOO: GWPL71AGE: 23 months

Vendor: GWF INVESTMENTS PTY LTD

RED NORTHLINE FAT TONY 605U (AMF) (MAF) (OSF)

SIRE: RUBY RED FAT BOY (AI) (AMF) (MAF) (NHF) (OSF) RRRJ1

TRIPLE M SNOOPY E73 (ET) (AI)

DONNA-LYNN FEDERER (ET) (AI)

DAM: DONNA-LYNN EMPRESS J9 1YNJ9

DONNA-LYNN EMPRESS (AI)

	GL	BW	200	400	600	MCW	MILK
EBV	-0.6	+1.7	+18	+28	+40	+36	
Acc	52%	71%	54%	47%	48%	34%	
	SS	CW	EMA	RIB	Rump	RBY	IMF
		+24					
		28%					

Treatments	
3 day	✓
7 in 1	✓
Tick Fever	✓



Notes:

Another good carcase bull with good growth for age, quiet nature.

An easy doing Fat Boy son.

Purchaser.....Price \$.....

July 2017 Red Angus GROUP BREEDPLAN: EBV AVG: GL -0.6 BW +2.8 200 +26 400 +40 600 +54							
MCW +53 MK +11 SS +0.9 EMA +1.2 RIB -0.2 RUMP -0.5 RBY +0.6 IMF-0.1							



15

HOLLY VALE RED LIVINGSTON APUL02

BORN: 26/09/2015

TATTOO: APUL02

AGE: 23 months

Vendor: ANGELA UEBERGANG

RED RMJ REDMAN 1T (MAF) (OSF)

SIRE: CROOBLE HERCULES CPCH15 (AI) CPCH15

CROOBLE CHERRY

GOONOO RED FULL ON (AI)

DAM: GOONOO RED GABBY GSJG6

GOONOO RED CASSIE D4 (AI)

	GL	BW	200	400	600	MCW	MILK
EBV	-0.4	+3.0	+21	+31	+42	+33	
Acc	42%	67%	53%	50%	51%	38%	
	SS	CW	EMA	RIB	Rump	RBV	IMF
	+0.8	+23	+1.3	+0.3	+0.3	+0.3	+0.2
	37%	36%	25%	31%	31%	28%	25%

Treatments	
7 in 1	✓
Vibriosis	✓
Pestigard	✓



Notes:

L2’s dam was purchased out of the 2013 Red Angus National after being sashed Reserve Jnr Champion Female that year. His sire Hercules is one of our herd sires by the great carcase bull Redman.

Purchaser.....Price \$.....

July 2017 Red Angus GROUP BREEDPLAN: EBV AVG: GL -0.6 BW +2.8 200 +26 400 +40 600 +54 MCW +53 MK +11 SS +0.9 EMA +1.2 RIB -0.2 RUMP -0.5 RBV +0.6 IMF -0.1
---



16

HOLLY VALE RED LINCOLN APUL03

BORN: 02/10/2015

TATTOO: APUL03

AGE: 23 months

Vendor: ANGELA UEBERGANG

RED RMJ REDMAN 1T (MAF) (OSF)

SIRE: CROOBLE HERCULES CPCH15 (AI) CPCH15  
CROOBLE CHERRY

GK RED COLT 19J C29 (AI) (AMF) (MAF) (NHF) (OSF)

DAM: HEARTLAND GRAZIA PJRG5  
BST TULLATOOLA UPI A98 (AI)

	GL	BW	200	400	600	MCW	MILK
EBV	-0.6	+0.8	+17	+28	+36	+35	+9
Acc	43%	66%	52%	48%	50%	39%	25%
	SS	CW	EMA	RIB	Rump	RBV	IMF
	+0.9	+23	+0.8	+0.3	+0.3	+0.1	+0.2
	36%	35%	25%	31%	31%	29%	26%

Treatments	
7 in 1	✓
Vibriosis	✓
Pestigard	✓



Notes:

Lincoln L3’s dam was also purchased at the 2013 Red Angus National after being awarded Senior Champion Female. Again by our Redman sire Hercules who is a well-muscled, solid bull.

Purchaser.....Price \$.....

July 2017 Red Angus GROUP BREEDPLAN: EBV AVG: GL -0.6 BW +2.8 200 +26 400 +40 600 +54 MCW +53 MK +11 SS +0.9 EMA +1.2 RIB -0.2 RUMP -0.5 RBV +0.6 IMF-0.1									
--	--	--	--	--	--	--	--	--	--

TRIPLE M LUNCH MONEY (ET) MMML50

BORN: 27/10/2015                      TATTOO: MMML50                      AGE: 22 months  
Vendor:    TRIPLE M RED ANGUS

RED COMPASS MULBERRY 449M  
SIRE: RED FINE LINE MULBERRY 26P (AMF) (MAF) (OSF) CANM1237972  
RED DUS FAYETTE 8G  
  
RED LOG EL CAPONE 515 (MAF)  
DAM: TREVONE PARK LITTLE PRINCESS (ET) (AI) (MAF) VDMX24  
TREVONE PARK SNOOPY (ET) (AI) (MAF)

	GL	BW	200	400	600	MCW	MILK
EBV	-1.2	+4.7	+39	+65	+84	+94	+13
Acc	57%	75%	65%	62%	62%	54%	54%
	SS	CW	EMA	RIB	Rump	RBV	IMF
	+1.1	+55	+1.5	+0.2	+0.0	+0.3	+0.5
	45%	52%	41%	49%	48%	46%	45%

Treatments	
3 day	✓
7 in 1	✓
Tick Fever	✓



**Notes:**  
Lunch Money is by the genetic powerhouse Mulberry 26P and is out of Trevone Park Little Princess, who goes back to the famous Snoopy line. He exhibits length and thickness and is incredibly free moving. He is a potential Stud Sire!

Purchaser.....Price \$.....

July 2017 Red Angus GROUP BREEDPLAN: EBV AVG: GL -0.6 BW +2.8 200 +26 400 +40 600 +54 MCW +53 MK +11 SS +0.9 EMA +1.2 RIB -0.2 RUMP -0.5 RBV +0.6 IMF-0.1									
--	--	--	--	--	--	--	--	--	--

18

TRIPLE M LOS ANGELES (ET) MMML53

BORN: 26/10/2015

TATTOO: MMML53

AGE: 22 months

Vendor: TRIPLE M RED ANGUS

LJT CITADEL 812 (OSF)

SIRE: TROTTERS STRONGHOLD 156 (AMF) (MAF) (NHF) (OSF) USAM1496650

LJT PEARL 579

RED WILDMAN DENALI 19L

DAM: RRA DODO (ET) (AI) RRAB17

RED HENDERSON DUCHESS 20'99

	GL	BW	200	400	600	MCW	MILK
EBV	+1.0	+4.1	+24	+36	+48	+50	
Acc	44%	72%	59%	55%	52%	35%	
	SS	CW	EMA	RIB	Rump	RBV	IMF
	+1.2	+27		+0.3	+0.3		
	25%	37%		26%	26%		

Treatments	
3 day	✓
7 in 1	✓
Tick Fever	✓



Notes:

Los Angeles is the first of two flush brothers by the new sire Trotters Stronghold. He is out of our ever-consistent Duchess family. He exhibits frame, length and stretch and is sure to add these traits to his progeny.

Purchaser.....Price \$.....

19

TRIPLE M LAS VEGAS (ET) MMML52

BORN: 26/10/2015

TATTOO: MMML52

AGE: 22 months

Vendor: TRIPLE M RED ANGUS

LJT CITADEL 812 (OSF)

SIRE: TROTTERS STRONGHOLD 156 (AMF) (MAF) (NHF) (OSF) USAM1496650

LJT PEARL 579

RED WILDMAN DENALI 19L

DAM: RRA DODO (ET) (AI) RRAB17

RED HENDERSON DUCHESS 20'99

	GL	BW	200	400	600	MCW	MILK
EBV	+0.9	+3.7	+23	+35	+46	+48	
Acc	44%	72%	59%	55%	52%	35%	
	SS	CW	EMA	RIB	Rump	RBV	IMF
	+1.1	+27		+0.3	+0.3		
	25%	37%		26%	26%		

Treatments	
3 day	✓
7 in 1	✓
Tick Fever	✓



Notes:

Las Vegas is no gamble. Always bet on red!!

He is a very similar bull to his full brother.

He is sound, with plenty of frame, length and eye appeal.

Purchaser.....Price \$.....

July 2017 Red Angus GROUP BREEDPLAN: EBV AVG: GL -0.6 BW +2.8 200 +26 400 +40 600 +54									
MCW +53 MK +11 SS +0.9 EMA +1.2 RIB -0.2 RUMP -0.5 RBV +0.6 IMF-0.1									

20

CLEARVIEW LEVI L1 (ET) CVRL1

BORN: 23/06/2015

TATTOO: CVRL1

AGE: 26 months

Vendor: GREG & MELINDA HOEY

RED BASIN TRENDSETTER 6074 (OSF)

SIRE: RED BIEBER ROUGH RIDER 10712 (MAF) (OSF) CANM1594761

RED BIEBER ADELLE 8958 (OSF)

RED LAZY MC SMASH 41N (OSF)

DAM: RED LAZY MC BESS 17S (MAF) (OSF) CANF1347083

RED LAZY MC BESS 57N (NHF)

	GL	BW	200	400	600	MCW	MILK
EBV	-0.6	+2.7	+25	+39	+52	+49	
Acc	30%	62%	46%	39%	41%	29%	
	SS	CW	EMA	RIB	Rump	RBV	IMF

Treatments	
3 day	✓
7 in 1	✓
Tick Fever	✓
Pestigard	✓



Notes:

Naturally thick & muscly butt, solid frame, with very hardy solid feet. Respects people & fences. Let to grow & mature on grass. All the Clearview bulls have been prepared on oats with a small amount of grain. Recommended for mature cows.

Purchaser.....Price \$.....

July 2017 Red Angus GROUP BREEDPLAN: EBV AVG: GL -0.6 BW +2.8 200 +26 400 +40 600 +54									
MCW +53 MK +11 SS +0.9 EMA +1.2 RIB -0.2 RUMP -0.5 RBV +0.6 IMF-0.1									

21

CLEARVIEW LOCKYER CVRL6

BORN: 27/06/2015

TATTOO: CVRL6

AGE: 26 months

Vendor: GREG & MELINDA HOEY

GLACIER CHATEAU 744 (OSF)

SIRE: TOPS ROYAL GEORGE'S CHATEAU (AI) RRMG2  
DONNA-LYNN BINDI

GK RED ATTENTION SECA A25

DAM: BOONYOUIN MISS MOLLY F60 MAKF60  
DONNA-LYNN MOLLY

	GL	BW	200	400	600	MCW	MILK
EBV	-0.1	+2.8	+25	+34	+54	+62	+10
Acc	35%	47%	40%	40%	38%	31%	31%
	SS	CW	EMA	RIB	Rump	RBV	IMF
		+33					
		30%					

Treatments	
3 day	✓
7 in 1	✓
Tick Fever	✓
Pestigard	✓



**Notes:**  
Darker bull who walks out well. Would even do well in tough / larger properties. Slick coat as well. His dam is a great milker, great udder, great doer. Paternal grand sire Glacier Chateau, paternal grand dam is the best doing cow we have, who has great legs & feet. All the Clearview bulls have been prepared on oats with a small amount of grain.

Purchaser.....Price \$.....

July 2017 Red Angus GROUP BREEDPLAN: EBV AVG: GL -0.6 BW +2.8 200 +26 400 +40 600 +54 MCW +53 MK +11 SS +0.9 EMA +1.2 RIB -0.2 RUMP -0.5 RBV +0.6 IMF-0.1									
--	--	--	--	--	--	--	--	--	--

22

CLEARVIEW LAURENCE L7 (ET) CVRL7

BORN: 28/06/2015

TATTOO: CVRL7

AGE: 26 months

Vendor: GREG & MELINDA HOEY

RED HOWE MR MAT DDH 19F

SIRE: RED HOWE MR MATRIX 7L (AMF) (MAF) (NHF) (OSF) CANM1066090

RED CRANSTON TINKERBELL 1J

CROWFOOT 4130P (BLACK)

DAM: RED YY PATTY 701T (MAF) (OSF) CANF1388323

RED BWA PATTY 10R

	GL	BW	200	400	600	MCW	MILK
EBV	-1.3	+1.8	+18	+29	+39	+31	
Acc	30%	62%	44%	37%	39%	27%	
	SS	CW	EMA	RIB	Rump	RBV	IMF

Treatments	
3 day	✓
7 in 1	✓
Tick Fever	✓
Pestigard	✓



Notes:

L7 was broken in as a yearling for Toowoomba Farmfest 2016. Has not had a halter on since. Respects people/fences. Dam is a deep bodied cow. All the Clearview bulls have been prepared on oats with a small amount of grain.

Purchaser.....Price \$.....

July 2017 Red Angus GROUP BREEDPLAN: EBV AVG: GL -0.6 BW +2.8 200 +26 400 +40 600 +54									
MCW +53 MK +11 SS +0.9 EMA +1.2 RIB -0.2 RUMP -0.5 RBV +0.6 IMF-0.1									



23

CLEARVIEW LOTUS CVRL11

BORN: 24/09/2015

TATTOO: CVRL11

AGE: 23 months

Vendor: GREG & MELINDA HOEY

TOPS ROYAL GRAND APPROVAL G1 (ET) (AI)

SIRE: CLEARVIEW JAMES BOND CVRJ1

BST TULLATOOLA RED LASS E2

TREVONE PARK KING PIN (ET) (AI)

DAM: TOPS ROYAL ELIZABETH (AI) RRME01

DONNA-LYNN BINDI

	GL	BW	200	400	600	MCW	MILK
EBV	-0.4	+3.2	+26	+36	+51	+51	+10
Acc	30%	40%	34%	32%	32%	27%	27%
	SS	CW	EMA	RIB	Rump	RBV	IMF
		+29					
		25%					

Treatments	
3 day	✓
7 in 1	✓
Tick Fever	✓
Pestigard	✓



Notes:

L11 was broken in as a yearling for Toowoomba Farmfest 2016. Has not had a halter on since. Respects people/fences, slick coat. Grand dam is the best doing/hardy cow we have. His sire was Supreme British Bull at Warwick show 2015 (super easy doing type). All the Clearview bulls have been prepared on oats with a small amount of grain.

Purchaser.....Price \$.....

July 2017 Red Angus GROUP BREEDPLAN: EBV AVG: GL -0.6 BW +2.8 200 +26 400 +40 600 +54 MCW +53 MK +11 SS +0.9 EMA +1.2 RIB -0.2 RUMP -0.5 RBV +0.6 IMF-0.1
---



24

GREENWOOD PARK LITTLE BIT OF FATBOY (AI)  
GWPL59

BORN: 23/11/2015

TATTOO: GWPL59

AGE: 21 months

Vendor: GWF INVESTMENTS PTY LTD

RED NORTHLINE FAT TONY 605U (AMF) (MAF) (OSF)

SIRE: RUBY RED FAT BOY (AI) (AMF) (MAF) (NHF) (OSF) RRRJ1

TRIPLE M SNOOPY E73 (ET) (AI)

BST TULLATOOLA STALLION F57 (AI)

DAM: IBR F57 DESIRE J170 IBRJ170

HICKS RED DESIRE Z648

	GL	BW	200	400	600	MCW	MILK
EBV	-1.0	+3.5	+25	+36	+52	+53	+10
Acc	53%	68%	55%	48%	49%	36%	28%
	SS	CW	EMA	RIB	Rump	RBV	IMF
	+0.7	+27		+0.1	+0.0	+0.3	+0.0
	26%	32%		28%	28%	26%	25%

Treatments	
3 day	✓
7 in 1	✓
Tick Fever	✓



Notes:

The last of the Fat boy bulls. Yet another well put-together bull from a maiden heifer who calved no problems. He has kept up well with his older brothers, being one of the youngest Greenwood bulls. His IBR dam J170 is being offered as lot 41 in this sale as well.

Purchaser.....Price \$.....

25

GREENWOOD PARK LAURIE L85 (ET) GWPL85

BORN: 26/11/2015

TATTOO: GWPL85

AGE: 21 months

Vendor: GWF INVESTMENTS PTY LTD

RED RMJ REDMAN 1T (MAF) (OSF)

SIRE: RED LAZY MC CC DETOUR 2W (AMF) (MAF) (NHF) (OSF) CANM1494226

RED LAZY MC BESS 12S (NHF)

RED SVR EXPLOSION 23M

DAM: RED TER-RON DIAMOND MIST 290P (AMF) (MAF) (NHF) CANF1225408

BIG SKY DIAMOND MIST 290 (BLACK RC)

	GL	BW	200	400	600	MCW	MILK
EBV	-1.1	+1.4	+15	+31	+34	+36	
Acc	39%	47%	41%	39%	37%	29%	
	SS	CW	EMA	RIB	Rump	RBV	IMF
		+23					
		29%					

Treatments	
3 day	✓
7 in 1	✓
Tick Fever	✓



**Notes:**  
L85 has a pedigree forged on low birthweight through his sire Detour. Detour is described by Lazy MC Angus has having calves that are consistent in type, born effortlessly and are phenotypically fancy. His dam Diamond Mist 290P was named the 2007 Grand Champion Red Angus Female at both Farmfair International and Agribition. With impressive structure, this bull will be ideal for heifers or mature cows alike.

Purchaser.....Price \$.....

July 2017 Red Angus GROUP BREEDPLAN: EBV AVG: GL -0.6 BW +2.8 200 +26 400 +40 600 +54 MCW +53 MK +11 SS +0.9 EMA +1.2 RIB -0.2 RUMP -0.5 RBV +0.6 IMF-0.1
--

26

BOONYOUIN LEO L52 MAKL52

BORN: 14/11/2015

TATTOO: MAKL52

AGE: 21 months

Vendor: GWF INVESTMENTS PTY LTD

PARINGA RED ADA E12

SIRE: IBR E12 HUDSON H112 (OSF) IBRH112

HICKS RED D674 (OSF)

BST TULLATOOLA THE NIGHT B9

DAM: CHAN ABBEY JULIET G34 ADXG34

DONNA-LYNN JULIET (TWIN)

	GL	BW	200	400	600	MCW	MILK
EBV	-0.3	+3.2	+27	+42	+55	+54	+9
Acc	29%	50%	47%	45%	43%	34%	32%
	SS	CW	EMA	RIB	Rump	RBV	IMF
	+0.6	+35	+1.9	+0.0	-0.2	+0.6	+0.2
	39%	36%	27%	32%	32%	30%	27%

Treatments	
3 day	✓
7 in 1	✓
Tick Fever	✓



**Notes:**  
Another good bull by the IBR bull, Hudson H112, who is full of Hicks, Paringa & Te Mania bloodlines. Plenty of meat on this easy-doing bull with above average growth & carcase EBVs. Half brother to lots 8 & 29 in this sale.

Purchaser.....Price \$.....

July 2017 Red Angus GROUP BREEDPLAN: EBV AVG: GL -0.6 BW +2.8 200 +26 400 +40 600 +54							
MCW +53 MK +11 SS +0.9 EMA +1.2 RIB -0.2 RUMP -0.5 RBV +0.6 IMF -0.1							

27

BOONYOUIN LEROY L62 MAK L62

BORN: 05/12/2015

TATTOO: MAK L62

AGE: 21 months

Vendor: MARYANNE KEARNEY

BOONYOUIN GUNNY G14

SIRE: BOONYOUIN JETHRO J28 MAK J28

HICKS BLACK DESIRE G70 (AI) (BLACK RC) (OSF)

TE MANIA RED LABEL Z1023 (ET) (AI) (AMF) (MAF) (NHF) (OSF)

DAM: BOONYOUIN RL MITTAGONG H12 (OSF) ANGQQGH12

STRATHEWEN MITTAGONG E26

	GL	BW	200	400	600	MCW	MILK
EBV	-1.5	+2.9	+32	+48	+56	+58	+17
Acc	36%	53%	57%	58%	59%	47%	34%
	SS	CW	EMA	RIB	Rump	RBV	IMF
	+0.9	+38	+1.1	+0.1	-0.2	+0.0	+0.7
	40%	48%	29%	35%	35%	33%	30%

Treatments	
3 day	✓
7 in 1	✓
Tick Fever	✓



**Notes:**  
Ideal heifer bull. Dark red, sleek coated, growthy bull with excellent EBVs and a pedigree packed full of Te Mania and Hicks bloodlines. His dam Mittagong H12 is my highest-ranking cow for IMF & Milk. Lightly used on my stud heifers over summer.

Purchaser.....Price \$.....

July 2017 Red Angus GROUP BREEDPLAN: EBV AVG: GL -0.6 BW +2.8 200 +26 400 +40 600 +54 MCW +53 MK +11 SS +0.9 EMA +1.2 RIB -0.2 RUMP -0.5 RBV +0.6 IMF-0.1									
--	--	--	--	--	--	--	--	--	--

28

BOONYOUIN MAGNETO M4 MAKM4

BORN: 11/01/2016

TATTOO: MAKM4

AGE: 19 months

Vendor: MARYANNE KEARNEY

PARINGA RED ADA E12

SIRE: IBR E12 HUDSON H112 (OSF) IBRH112

HICKS RED D674 (OSF)

DONNA-LYNN DOMINATOR (AMF) (MAF) (NHF) (OSF)

DAM: BOONYOUIN TRIX G16 MAKG16

TREVONE PARK TRIX B2 (ET) (AI)

	GL	BW	200	400	600	MCW	MILK
EBV	-0.4	+4.2	+33	+46	+66	+64	+13
Acc	30%	51%	56%	57%	51%	39%	31%
	SS	CW	EMA	RIB	Rump	RBV	IMF
	+0.7	+41	+2.5	+0.2	+0.1	+0.9	+0.1
	39%	46%	30%	38%	38%	35%	29%

Treatments	
3 day	✓
7 in 1	✓
Tick Fever	✓



Notes:

Excellent confirmation and muscle pattern in this eye-catching young bull. His sire was bred by Berry Reynolds IBR Red Angus, from Hicks, Paringa & Te Mania bloodlines. Magneto is out of another gorgeous Dominator show cow who was Supreme Exhibit at Gatton 2013, and Res Champ Female at the Ekka that year.

Purchaser.....

Price \$.....

July 2017 Red Angus GROUP BREEDPLAN: EBV AVG: GL -0.6 BW +2.8 200 +26 400 +40 600 +54 MCW +53 MK +11 SS +0.9 EMA +1.2 RIB -0.2 RUMP -0.5 RBV +0.6 IMF-0.1
---

29

## BOONYOUIN LIEUTENANT L60 MAKL60

BORN: 16/12/2015

TATTOO: MAKL60

AGE: 20

months

Vendor: MARYANNE KEARNEY

RED NORTHLINE FATHOM 605U (AMF) (MAF) (OSF)

SIRE: BOONYOUIN H7 (ET) (AI) (AMF) (MAF) (NHF) (OSF) MAKH7  
TREVONE PARK TRIX B2 (ET) (AI)

DONNA-LYNN DOMINATOR (AMF) (MAF) (NHF) (OSF)

DAM: BOONYOUIN MOLLY G60 MAKG60

DONNA-LYNN MOLLY X9

30

## BOONYOUIN MARSHAL M3 MAKM3

BORN: 07/01/2016

TATTOO: MAKM3

AGE: 19 months

Vendor: MARYANNE KEARNEY

RED NORTHLINE FATHOM 605U (AMF) (MAF) (OSF)

SIRE: BOONYOUIN MARSHAL H7 (ET) (AI) (AMF) (MAF) (NHF) (OSF) MAKH7  
TREVONE PARK TRIX B2 (ET) (AI)

GK RED ATTENTION SECA A25

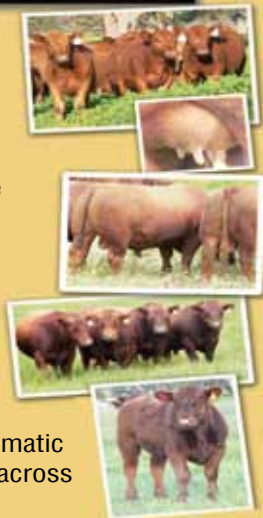
DAM: BOONYOUIN HONOR H56 MAKH56

BST TULLATOOLA SHIRAX C46 (AI)



Red Angus cattle have all the attributes of Angus with the addition of the homozygous red coat colour. Red Angus cattle excel for temperament, maternal qualities and carcase characteristics.

Red Angus and their crosses are keenly sought after commercial producers as a cornerstone for their production system. Red Angus has the ability to adapt to a vast range of the climatic conditions to be encountered across Australia.



July 2017 Red Angus GROUP BREEDPLAN: EBV AVG: GL -0.6 BW +2.8 200 +26 400 +40 600 +54  
MCW +53 MK +11 SS +0.9 EMA +1.2 RIB -0.2 RUMP -0.5 RBV +0.6 IMF -0.1

31

ROSEMULLION RED MARENGO (AI) HMDM4

BORN: 30/01/2016

TATTOO: HMDM4

AGE: 19 months

Vendor: ROSEMULLION RED ANGUS

RED FINE LINE MULBERRY 26P (AMF) (MAF) (OSF)

SIRE: GK 26 FEDERER F23 (AI) (AMF) (MAF) (NHF) (OSF) GK F23

IBR RED BELLA R512 (ET) (AI) (MAF)

RRA THE NIGHT (AI) (AMF) (MAF) (NHF) (OSF)

DAM: BST TULLATOOLA JOSIE G145 BSTG145

EBONY LODGE JOSIE C157 (AI)

	GL	BW	200	400	600	MCW	MILK
EBV	+0.5	+4.1	+33	+51	+68	+69	+12
Acc	51%	60%	54%	51%	50%	42%	40%
	SS	CW	EMA	RIB	Rump	RBV	IMF
	+1.2	+45	+1.4	-0.5	-0.9	+0.9	+0.1
	33%	41%	30%	37%	37%	35%	34%

Treatments	
3 day	
7 in 1	✓
Tick Fever	✓



Notes:

A dark red son of triple trait leader GK Federer, M4 himself is in the top 10% for growth. He has plenty of natural thickness, bone, softness and smoothness, combined with a placid temperament. His dam is consistently producing progeny with above average EBVs.

Purchaser.....Price \$.....

July 2017 Red Angus GROUP BREEDPLAN: EBV AVG: GL -0.6 BW +2.8 200 +26 400 +40 600 +54									
MCW +53 MK +11 SS +0.9 EMA +1.2 RIB -0.2 RUMP -0.5 RBV +0.6 IMF -0.1									

32

ROSEMULLION RED MARSHALL (AI) HMDM6

BORN: 28/02/2016

TATTOO: HMDM6

AGE: 18 months

Vendor: ROSEMULLION RED ANGUS

RED FINE LINE MULBERRY 26P (AMF) (MAF) (OSF)

SIRE: GK 26 FEDERER F23 (AI) (AMF) (MAF) (NHF) (OSF) GK F23

IBR RED BELLA R512 (ET) (AI) (MAF)

RED NORTHLINE FAT TONY 605U (AMF) (MAF) (OSF)

DAM: ROSEMULLION RED HELEN (ET) (AI) HMDH2

TREVONE PARK TRIX B2 (ET) (AI)

	GL	BW	200	400	600	MCW	MILK
EBV	+0.6	+3.4	+28	+44	+63	+58	+10
Acc	57%	68%	58%	53%	53%	41%	36%
	SS	CW	EMA	RIB	Rump	RBV	IMF
	+1.0	+42	+1.9	-0.2	-0.4	+1.0	+0.1
	30%	39%	27%	35%	35%	32%	31%

Treatments	
3 day	
7 in 1	✓
Tick Fever	✓



Notes:

A combination of great genetics in M6 resulting in positive EBVs for growth, EMA and fat. A son of triple trait leader GK Federer combined with the muscle power from his maternal sire, Red Northline Fat Tony 605U, M6 is the complete package.

Purchaser.....Price \$.....

July 2017 Red Angus GROUP BREEDPLAN: EBV AVG: GL -0.6 BW +2.8 200 +26 400 +40 600 +54
MCW +53 MK +11 SS +0.9 EMA +1.2 RIB -0.2 RUMP -0.5 RBV +0.6 IMF-0.1



33

ROSEMULLION RED MALCOLM HMDM9

BORN: 18/04/2016

TATTOO: HMDM9

AGE: 16 months

Vendor: ROSEMULLION RED ANGUS

RED PIE GAME ON 9109 (AMF) (MAF) (NHF) (OSF)

SIRE: ROSEMULLION RED HERBERT (ET) (AI) (OSF) HMDH1

DONNA-LYNN CHERIE

HICKS MAKE MY DAY Y573 (AI)

DAM: HICKS RED PATRICIA D679 (OSF) HRAD679

HICKS RED PATRICIA A518 (AI)

	GL	BW	200	400	600	MCW	MILK
EBV	+0.0	+3.5	+30	+40	+58	+50	+16
Acc	36%	50%	44%	43%	43%	34%	35%
	SS	CW	EMA	RIB	Rump	RBV	IMF
	+0.5	+33	+1.0	+0.2	+0.1	+0.1	+0.5
	31%	35%	26%	34%	34%	32%	30%

Treatments	
3 day	
7 in 1	✓
Tick Fever	✓



**Notes:**  
With above average EBVs for growth, in the top 5% for milk and in the top 15% for IMF, this thick easy doing, good natured bull will add value to any herd.

Purchaser.....Price \$.....

July 2017 Red Angus GROUP BREEDPLAN: EBV AVG: GL -0.6 BW +2.8 200 +26 400 +40 600 +54 MCW +53 MK +11 SS +0.9 EMA +1.2 RIB -0.2 RUMP -0.5 RBV +0.6 IMF-0.1									
--	--	--	--	--	--	--	--	--	--



# COMBAT BUFFALO FLY

Get up to 4 months protection from buffalo fly for your cattle. We've got you covered with a range of ear tags and different actives to combat resistance. Talk to your local Bayer Area Manager about winning the buffalo fly battle by calling 1800 678 368.



We've got you covered.

Bayer Australia Limited. 875 Pacific Highway, Pymble NSW 2073, ACN 000 138 714. Find out more at [farmadvisor.com.au](http://farmadvisor.com.au). Co-Ral®, Patriot® and Cylene® are registered trademarks of the Bayer Group.



34

CLEARVIEW MAL MANINGA CVRM1

BORN: 16/01/2016

TATTOO: CVRM1

AGE: 19 months

Vendor: GREG & MELINDA HOEY

RED LAZY MC CC DETOUR 2W (AMF) (MAF) (NHF) (OSF)

SIRE: TRIPLE M JAY WALKING (ET) (AI) MMMJ42

TREVONE PARK LODI E2 (AI)

TOPS ROYAL GRAND APPROVAL G1 (ET) (AI)

DAM: CLEARVIEW MOLLY'S JANICE CVRJ2

BOONYOUIN MISS MOLLY F60

	GL	BW	200	400	600	MCW	MILK
EBV	-0.2	+4.4	+28	+43	+58	+57	
Acc	36%	68%	50%	44%	45%	33%	
	SS	CW	EMA	RIB	Rump	RBV	IMF
		+33					
		27%					

Treatments	
3 day	✓
7 in 1	✓
Tick Fever	
Pestigard	✓



**Notes:**  
Quick fattening, grower type bull. Respects people/fences. Dam is by an Approval son. Sire's dam: very nice grower sort. Sire's sire: Detour by Redman. All the Clearview bulls have been prepared on oats with a small amount of grain.

Purchaser.....Price \$.....

July 2017 Red Angus GROUP BREEDPLAN: EBV AVG: GL -0.6 BW +2.8 200 +26 400 +40 600 +54 MCW +53 MK +11 SS +0.9 EMA +1.2 RIB -0.2 RUMP -0.5 RBV +0.6 IMF -0.1									
---	--	--	--	--	--	--	--	--	--

35

CLEARVIEW MACK CVRM2

BORN: 19/01/2016

TATTOO: CVRM2

AGE: 19 months

Vendor: GREG & MELINDA HOEY

RED LAZY MC CC DETOUR 2W (AMF) (MAF) (NHF) (OSF)

SIRE: TRIPLE M JAY WALKING (ET) (AI) MMMJ42

TREVONE PARK LODI E2 (AI)

TOPS ROYAL GRAND APPROVAL G1 (ET) (AI)

DAM: CLEARVIEW ELIZABETH'S JASMIN CVRJ3

TOPS ROYAL ELIZABETH (AI)

	GL	BW	200	400	600	MCW	MILK
EBV	-0.1	+4.5	+28	+43	+58	+55	
Acc	37%	69%	52%	45%	46%	34%	
	SS	CW	EMA	RIB	Rump	RBV	IMF
		+33					
		27%					

Treatments	
3 day	✓
7 in 1	✓
Tick Fever	
Pestigard	✓



Notes:

Quick fattening, grower type bull. Respects people/fences. Dam is by an Approval son Sire's dam: very nice grower sort. Sire's sire: Detour by Redman. All the Clearview bulls have been prepared on oats with a small amount of grain.

Purchaser.....Price \$.....

July 2017 Red Angus GROUP BREEDPLAN: EBV AVG: GL -0.6 BW +2.8 200 +26 400 +40 600 +54									
MCW +53 MK +11 SS +0.9 EMA +1.2 RIB -0.2 RUMP -0.5 RBV +0.6 IMF -0.1									

36

CLEARVIEW MAVERICK CVRM3

BORN: 06/02/2016

TATTOO: CVRM3

AGE: 19 months

Vendor: GREG & MELINDA HOEY

RED LAZY MC CC DETOUR 2W (AMF) (MAF) (NHF) (OSF)

SIRE: TRIPLE M JAY WALKING (ET) (AI) MMMJ42

TREVONE PARK LODI E2 (AI)

TOPS ROYAL GRAND APPROVAL G1 (ET) (AI)

DAM: CLEARVIEW BINDI'S JEWEL CVRJ4

DONNA-LYNN BINDI

	GL	BW	200	400	600	MCW	MILK
EBV	-0.8	+2.1	+21	+34	+46	+47	
Acc	37%	69%	52%	45%	46%	34%	
	SS	CW	EMA	RIB	Rump	RBV	IMF
		+29					
		26%					

Treatments	
3 day	✓
7 in 1	✓
Tick Fever	
Pestigard	✓



Notes:

Quick fattening, grower type bull. Respects people/fences. Dam is by an Approval son. Sire's dam: very nice grower sort. Sire's sire: Detour by Redman. All the Clearview bulls have been prepared on oats with a small amount of grain.

Purchaser.....Price \$.....

July 2017 Red Angus GROUP BREEDPLAN: EBV AVG: GL -0.6 BW +2.8 200 +26 400 +40 600 +54									
MCW +53 MK +11 SS +0.9 EMA +1.2 RIB -0.2 RUMP -0.5 RBV +0.6 IMF-0.1									

GK RED 905 MERCHANT M13 (AI) GK M13

BORN: 17/06/2016

TATTOO: GK M13

AGE: 14 months

Vendor: G & K ISEPPI

RED BUF CRK HOBO 1961

SIRE: RED GET-A-LONG WANDER 905 (AMF) (MAF) (NHF) (OSF) CANM1529124

RED SSFA JOANNA 93T

RED FINE LINE MULBERRY 26P (AMF) (MAF) (OSF)

DAM: GK RED 26 ROSE K12 (ET) (AI) GK K12

RED WHEEL ROSE 36S

	GL	BW	200	400	600	MCW	MILK
EBV	-0.6	+2.5	+27	+41	+57	+55	
Acc	46%	60%	53%	51%	48%	34%	
	SS	CW	EMA	RIB	Rump	RBV	IMF
		+38					
		36%					

Treatments	
3 day	✓
7 in 1	✓
Tick Fever	✓
Pestiguard	✓



**Notes:**  
Merchant M13 is an easy doing, moderate Birth Weight, big middled, early maturing son of outcross sire Red Get-A-Long Wander 905. M13’s dam, Rose K12 was imported from Canada as an embryo from Wheelers Stock Farm in Saskatchewan. Rose K12 is a thick topped, easy doing first calving Mulberry daughter of moderate maturity pattern. Merchant M13 will add volume, substance and softness to his progeny and would make a very safe bull to use on maiden heifers.

Purchaser.....Price \$.....

38

GK RED 21 MAJOR M12 (AI) GK M12

BORN: 15/06/2016

TATTOO: GK M12

AGE: 14 months

Vendor: G & K ISEPPI

RED SSS SOLDIER 365W (AMF) (MAF) (NHF) (OSF)

SIRE: RED LAZY MC TROOPER 21Y (AMF) (MAF) (NHF) (OSF) CANM1639504

LAZY MC EXPRESS 60W (BLACK RC)

RED BRYLOR NEW TREND 22D (MAF)

DAM: GK RED TRENDY SIENA K9 (ET) (AI) GK K09

RED DIAMOND D SIENA 292H

	GL	BW	200	400	600	MCW	MILK
EBV	-1.3	+2.1	+27	+44	+58	+44	+14
Acc	56%	67%	61%	58%	55%	40%	30%
	SS	CW	EMA	RIB	Rump	RBY	IMF
		+40		-0.2	-0.4	+1.0	+0.1
		42%		30%	30%	28%	26%

Treatments	
3 day	✓
7 in 1	✓
Tick Fever	✓
Pestiguard	✓



Notes:

Major M12 is a moderate birthweight, maternally bred son of our successful sire Red Lazy MC Trooper 21Y. M12 is out of a two-year-old heifer who was a Canadian imported embryo from Brylor Ranch. She is by the maternal powerhouse New Trend 22D and from the Siena cow family.

Purchaser.....Price \$.....



39

GK RED 21 MARSHALL M20 (ET) (AI) GK M20

BORN: 15/08/2016

TATTOO: GK M20

AGE: 12 months

Vendor: G & K ISEPPI

RED SSS SOLDIER 365W (AMF) (MAF) (NHF) (OSF)

SIRE: RED LAZY MC TROOPER 21Y (AMF) (MAF) (NHF) (OSF) CANM1639504

LAZY MC EXPRESS 60W (BLACK RC)

RED FINE LINE MULBERRY 26P (AMF) (MAF) (OSF)

DAM: GK RED RUBA 26 G40 (ET) (AI) GK G40

RED HOWE MS RUBA DDH 7H (MAF)

	GL	BW	200	400	600	MCW	MILK
EBV	-0.7	+2.2	+25	+41	+61	+59	+11
Acc	49%	58%	50%	46%	46%	39%	29%
	SS	CW	EMA	RIB	Rump	RBV	IMF
		+41		+0.3	+0.2		
		34%		25%	25%		

Treatments	
3 day	✓
7 in 1	✓
Tick Fever	✓
Pestiguard	✓



**Notes:**  
Marshall M20 is a good fronted, smooth made young yearling Trooper son out of our magnificent Ruba G40 cow. Ruba was named Supreme Beef exhibit at this year’s Sydney Royal Easter Show and is a simply superb, easy doing beef cow. Marshall was also only very moderate born so would be ideal to use on heifers.

Purchaser.....Price \$.....

July 2017 Red Angus GROUP BREEDPLAN: EBV AVG: GL -0.6 BW +2.8 200 +26 400 +40 600 +54 MCW +53 MK +11 SS +0.9 EMA +1.2 RIB -0.2 RUMP -0.5 RBV +0.6 IMF-0.1
---



# COWS

## 40 GK RED DINA 164 K33 (AI) GK K33

BORN: 14/10/2014

TATTOO: GK K33

AGE: 34 months

Vendor: G & K ISEPPI

RED VGW GAME PLAN 816 (AMF) (MAF) (NHF) (OSF)

SIRE: RED SIX MILE GAME FACE 164Y (AMF) (MAF) (NHF) (OSF) CANM1606723  
RED SIX MILE LAKOTO 35W

RED FINE LINE MULBERRY 26P (AMF) (MAF) (OSF)

DAM: GK JUTLAND DINA 26 H35 (AI) GK H35

JUTLAND ELSIE (ET) (AI) (MAF)

	GL	BW	200	400	600	MCW	MILK
EBV	-1.1	+3.2	+33	+53	+72	+67	+12
Acc	61%	63%	64%	61%	65%	54%	37%
	SS	CW	EMA	RIB	Rump	RBV	IMF
		+49	+1.7	-0.3	-0.6	+1.1	+0.1
		51%	30%	41%	41%	38%	36%

Treatments	
3 day	✓
7 in 1	✓
Tick Fever	✓
Pestiguard	



**Notes:** Dina K33 is a standout potential Donor or foundation female. K33 combines moderate birth weight (actual 27kgs), with plenty of performance and is a big ribbed, thick topped cow with a heap of milk quality and a lovely udder. She sells with a very classy, January Show prospect heifer calf at side (GK Red Dina 240 N1) sired by the U.S outcross bull Andras New Direction R240. K33 sells bred back and preg scanned safe to the Australian bred Millwillah Marble Bar J53: AI'd on 25.03.17. On her Dam's side, K33 goes back to our first Sydney Interbreed Champion female GK Red Dina X3 who won both Sydney and the Red Angus National in 2007 and sold for the National Show and Sale record female price of \$16,000. Dina K33 is in the top 10% of the breed for 200, 400 & 600 day weight, top 5% for carcase weight, top 15% for retail beef yield and the top 30% for milk. Her maternal brother sells as Lot 6 in this sale. GK reserve the right to a half share flush in K33 to a mutually agreed on bull, to be carried out at a future date at the buyers convenience. Calf N01 has been vaccinated for tickfever and 7 in 1.

Purchaser.....Price \$.....

July 2017 Red Angus GROUP BREEDPLAN: EBV AVG: GL -0.6 BW +2.8 200 +26 400 +40 600 +54  
MCW +53 MK +11 SS +0.9 EMA +1.2 RIB -0.2 RUMP -0.5 RBV +0.6 IMF -0.1

IBR F57 DESIRE J170 IBRJ170

**BORN:** 20/09/2013

**TATTOO:** IBRJ170

**AGE:** 4 years

**Vendor:** GWF INVESTMENTS PTY LTD

RED BRYLOR STALLION 19J (MAF) (OSF)  
**SIRE: BST TULLATOOLA STALLION F57 (AI) BSTF057**  
BST TULLATOOLA VERITY A59 (AI)

HICKS REBEL ROBIN W538 (AI)  
**DAM: HICKS RED DESIRE Z648 HRAZ648**  
HICKS RED DESIRE R9 (ET) (AI)

	GL	BW	200	400	600	MCW	MILK
EBV	-0.1	+4.3	+27	+38	+56	+71	+7
Acc	51%	65%	63%	58%	58%	47%	45%
	SS	CW	EMA	RIB	Rump	RBV	IMF
	+0.7	+28	+0.3	-0.1	-0.3	+0.2	-0.2
	37%	47%	34%	44%	44%	41%	40%

Treatments	
3 day	
7 in 1	✓
Tick Fever	



Notes:

PTIC to RED TER-RON PARKER 34A to calve mid October. Purchased out of the IBR dispersal sale in 2014, Desire J170 has produced 2 good bulls for us so far. Her first calf is lot 24 in this sale and her 2<sup>nd</sup> calf, is in Greenwood Parks’ current show team. We have a number of out-standing Parker calves on the ground (as seen in Lot 44) and this impending calf should be just as good.

Purchaser.....Price \$.....

July 2017 Red Angus GROUP BREEDPLAN: EBV AVG: GL -0.6 BW +2.8 200 +26 400 +40 600 +54 MCW +53 MK +11 SS +0.9 EMA +1.2 RIB -0.2 RUMP -0.5 RBV +0.6 IMF -0.1									
---	--	--	--	--	--	--	--	--	--

# HEIFERS

42

## ROSEMULLION RED LEAH (AI) HMDL7

BORN: 26/09/2015      TATTOO: HMDL7      AGE: 23 months  
Vendor: ROSEMULLION RED ANGUS

RED FINE LINE MULBERRY 26P (AMF) (MAF) (OSF)  
SIRE: GK 26 FEDERER F23 (AI) (AMF) (MAF) (NHF) (OSF) GK F23  
IBR RED BELLA R512 (ET) (AI) (MAF)  
FERNDAL PARK ROB ROY (ET) (AI)  
DAM: DONNA-LYNN BREANNA (OSF) 1YNB16  
DONNA-LYNN RED CHERRY Z7

	GL	BW	200	400	600	MCW	MILK
EBV	+0.8	+2.7	+25	+38	+53	+60	+7
Acc	62%	74%	66%	63%	60%	46%	41%
	SS	CW	EMA	RIB	Rump	RBV	IMF
	+0.8	+34	+0.4	-1.0	-1.6	+1.0	-0.4
	30%	47%	28%	34%	34%	32%	31%

Treatments	
3 day	
7 in 1	✓
Tick Fever	✓



Notes:  
A long bodied, feminine Federer daughter who has a sweet temperament.  
Depastured with our Grenade sire Kaboom K1 from 6/6/17. (See supp sheet for updated details).

Purchaser.....Price \$.....

July 2017 Red Angus GROUP BREEDPLAN: EBV AVG: GL -0.6 BW +2.8 200 +26 400 +40 600 +54 MCW +53 MK +11 SS +0.9 EMA +1.2 RIB -0.2 RUMP -0.5 RBV +0.6 IMF -0.1
---

43

ROSEMULLION RED MILLY HMDM8

BORN: 27/03/2016TATTOO: HMDM8AGE: 17 months

Vendor: ROSEMULLION RED ANGUS

RED DMM BRYLOR THUMP 2T (MAF) (OSF)

SIRE: ROSEMULLION RED JASPER (ET) (AI) HMDJ3

TREVONE PARK DREAM GIRL Z6 (AI)

CHAN ABBEY WITZEL SAKIC E55 (ET) (AI)

DAM: CHAN ABBEY CORRINE H49 ADXH49

ROSEDURNATE CORRINE (AI)

Treatments	
3 day	
7 in 1	✓
Tick Fever	

	GL	BW	200	400	600	MCW	MILK
EBV	-0.3	+3.7	+26	+37	+54	+50	+10
Acc	33%	47%	40%	38%	38%	32%	31%
	SS	CW	EMA	RIB	Rump	RBV	IMF
	+0.6	+30		-0.5	-0.7		
	25%	29%		25%	25%		



Notes:

A lovely easy doing feminine heifer. With the influence of 600-day trait leading grandsire Thump2T and the full Canadian breeding of her dam’s sire Witzel Sakic E55, M8 presents as a great breeding opportunity. The dam of Lot 11 is a full flush sister to M8’s sire. (See supp sheet for updated details).

Purchaser.....Price \$.....

July 2017 Red Angus GROUP BREEDPLAN: EBV AVG: GL -0.6 BW +2.8 200 +26 400 +40 600 +54							
MCW +53 MK +11 SS +0.9 EMA +1.2 RIB -0.2 RUMP -0.5 RBV +0.6 IMF-0.1							

44

GREENWOOD PARK ROSE (AI) GWPM39

BORN: 02/12/2016

TATTOO: GWPM39

AGE: 9 months

Vendor: GWF INVESTMENTS PTY LTD

TER-RON PARK PLACE 18Y (BLACK RC)

SIRE: RED TER-RON PARKER 34A (AMF) (MAF) (NHF) (OSF) CANM1726773

RED TER-RON DIAMOND MIST 164Y

DMM CREED 75W (BLACK RC) (AMF) (MAF) (NHF) (OSF)

DAM: T&R ROSE J8 (ET) TRHJ8

BST TULLATOOLA ROSE G68 (AI)

	GL	BW	200	400	600	MCW	MILK
EBV	+0.2	+3.4	+24	+37	+49	+43	
Acc	44%	70%	52%	46%	46%	32%	
	SS	CW	EMA	RIB	Rump	RBV	IMF
		+30					
		27%					

Treatments	
3 day	
7 in 1	✓
Tick Fever	✓



Notes:

The first Parker 34A progeny to sell at sale in Australia. Our attractive Rose M39 (Millie) is a standout in our heifer calves, possibly the best yet. So easy doing with femininity, structure and muscle definition all combining in this complete package. Her dam is by the outcross sire DMM Creed and the Parker calves at Greenwood Park continue to impress for their power, type and temperament. With the strong milk attributes from her dam and being unassisted at birth she presents an exciting future breeding prospect. Millie has also been well broken in for showing most recently alongside her mother at Gatton achieving Grand Champion British female (with the judge talking more of Millie than her mother). We would be happy to keep her in the herd but as they say, “cannot keep them all”.

Purchaser.....Price \$.....

July 2017 Red Angus GROUP BREEDPLAN: EBV AVG: GL -0.6 BW +2.8 200 +26 400 +40 600 +54 MCW +53 MK +11 SS +0.9 EMA +1.2 RIB -0.2 RUMP -0.5 RBV +0.6 IMF-0.1
---

45

GK RED HOT ROUGE M46 GK M46

BORN: 25/11/2016

TATTOO: GK M46

AGE: 9 months

Vendor: G & K ISEPPI

RED BADLANDS NET WORTH 23U (MAF) (OSF)

SIRE: GK RED 23U HOT SPIN H49 (ET) GK H49

RED BRYLOR ANNIE 240U (MAF)

RED FINE LINE MULBERRY 26P (AMF) (MAF) (OSF)

DAM: GK RED ROUGE 26 H11 (ET) (AI) (MAF) GK H11

RED COMPASS MS DIVIDEND 815J (MAC)

	GL	BW	200	400	600	MCW	MILK
EBV	+0.1	+3.0	+26	+42	+57	+60	+11
Acc	29%	43%	41%	37%	36%	28%	30%
	SS	CW	EMA	RIB	Rump	RBV	IMF
		+37					
		29%					

Treatments	
3 day	✓
7 in 1	✓
Tick Fever	✓
Pestiguard	✓



**Notes:**  
What a little cracker this heifer is! This baby heifer is sired by our outcross Net Worth 23U son, Hotspin H49. M46 is one of our favourite weaner heifers at GK and would make a definite Show prospect or a fantastic foundation female to build a cow family around in any herd. Her dam Rouge H11 was Reserve Intermediate Champion Heifer at the Toowoomba Angus Youth Roundup in 2014 and is a super attractive Mulberry daughter with a standard picture perfect “Mulberry” udder. H11 is a full sister to GK Big Easy 26 E28 who won the Sydney Royal in 2011. The terrific old grand dam of this gorgeous young female was our great old Canadian Donor cow Red Compass MS Dividend 815J. Red Hot Rouge M46 is a sweet fronted, super thick topped heifer with plenty of depth of rib and mass combined with good sound structure and bone. One not to be missed! Sells unjoined.

Purchaser.....Price \$.....

July 2017 Red Angus GROUP BREEDPLAN: EBV AVG: GL -0.6 BW +2.8 200 +26 400 +40 600 +54 MCW +53 MK +11 SS +0.9 EMA +1.2 RIB -0.2 RUMP -0.5 RBV +0.6 IMF -0.1
---

46

GK RED MAPLE 94 M37 GK M37

BORN: 11/10/2016

TATTOO: GK M37

AGE: 10 months

Vendor: G & K ISEPPI

FERNDALE PARK RAM (AI) (MAF)

SIRE: BANDEEKA DRAGON FLY (AI) (MAF) LGKD94

BANDEEKA OAKLEAF Z94 (AI) (OSF)

GK 26 FEDERER F23 (AI) (AMF) (MAF) (NHF) (OSF)

DAM: GK RED 23 MAPLE K19 (AI) GK K19

GK RED MAPLE Z13 (AI) (OSF)

	GL	BW	200	400	600	MCW	MILK
EBV	-0.5	+2.9	+28	+41	+60	+63	+8
Acc	38%	53%	56%	48%	47%	38%	37%
	SS	CW	EMA	RIB	Rump	RBV	IMF
		+38		-0.5	-0.9	+1.0	
		38%		27%	27%	25%	

Treatments	
3 day	✓
7 in 1	✓
Tick Fever	✓
Pestiguard	✓



**Notes:**  
Maple M37 is a lovely natured feminine daughter of our Western Australian Sire Bandeeka Dragon Fly D94. Dragon Fly is a massive, easy doing bull and was still out working cows this Summer rising 9 years of age. M37’s Dam K19, is a big GK Federer daughter who was named Junior Champion Red Angus Heifer at the Brisbane Royal in 2015 and has gone on to become a very good breeding female. M37 would make a fantastic Junior Show Prospect. Sells unjoined.

Purchaser.....Price \$.....



47

GK RED FOXY LADY 314 M36 (ET) (AI) GK M36

BORN: 04/10/2016TATTOO: GK M36AGE: 11 months

Vendor: G & K ISEPPI

RED LAZY MC EYE SPY 64Y

SIRE: RED WPRA LEGACY A-314 (AMF) (MAF) (NHF) (OSF) CANM1777454

RED WPRA EVERLEDA ENTENSE 610

TERANGA FIREFOX N80 (RED) (MAF)

DAM: KANSAS RED LADY X V116 (AI) (MAF) KL V116

KANSAS LADY X Q9 (ET) (AI)

	GL	BW	200	400	600	MCW	MILK
EBV	-0.5	+3.4	+26	+42	+53	+50	+11
Acc	41%	47%	44%	41%	40%	32%	39%
	SS	CW	EMA	RIB	Rump	RBV	IMF
		+33					
		31%					

Treatments	
3 day	✓
7 in 1	✓
Tick Fever	✓
Pestiguard	✓



**Notes:**  
Foxy Lady M36 is a super feminine and growth heifer with a unique and outcross pedigree. M36 is sired by WPRA Legacy and is one of the first progeny to sell by this super stout North American Sire in Australia. She will also probably be the last daughter to sell out of the truly magnificent old Kansas Red Lady X V116 cow, the matriach of the GK Red Foxy Lady family. V116 was one of the cornerstones of the GK herd and continued producing both awesome females and bulls until the ripe old age of 16 years. M36 is a maternal sister to the top priced bull at the Inaugural Power of Red Sale for \$10,000 (GK Red Jeopardy J51) and she is also a maternal sister to Foxy Lady A15 who sold for \$15,000 to BJ’s Stud Cattle in Victoria. A15 went on to win at the 2009 Brisbane Royal and the Adelaide Royal Red Angus Feature Show in 2009 before being named a member of the Supreme Champion Beef Pair at Adelaide. Sells unjoined.

Purchaser.....Price \$.....

July 2017 Red Angus GROUP BREEDPLAN: EBV AVG: GL -0.6 BW +2.8 200 +26 400 +40 600 +54
MCW +53 MK +11 SS +0.9 EMA +1.2 RIB -0.2 RUMP -0.5 RBV +0.6 IMF-0.1



48

BOONYOUIN TRIX M26 MAKM26

BORN: 12/09/2016

TATTOO: MAKM26

AGE: 11 months

Vendor: MARYANNE KEARNEY

WOLLUMBI GET SMART (AI)

SIRE: BOONYOUIN KAOS K7 MAKK7

BST TULLATOOLA DIFFY D59 (AI)

TE MANIA RED LABEL Z1023 (ET) (AI) (AMF) (MAF) (NHF) (OSF)

DAM: BOONYOUIN RL TRIX J10 (ET) (AI) MAKJ10

BOONYOUIN LCC TRIX G20 (ET) (AI)

	GL	BW	200	400	600	MCW	MILK
EBV	-0.4	+3.3	+30	+48	+66	+67	+18
Acc	35%	52%	57%	49%	47%	36%	33%
	SS	CW	EMA	RIB	Rump	RBV	IMF
	+1.2	+42	+2.0	+0.4	+0.3	+0.3	+0.6
	30%	38%	25%	32%	31%	30%	28%

Treatments	
3 day	
7 in 1	✓
Tick Fever	



**Notes:**  
A tough decision to sell this lovely heifer. She has a great combination of bloodlines with OLC Chateau, Red Label, Robin Hood, excellent EBVs to back up the breeding, all packed into an easy doing, fleshy heifer. She was the calf on the Res Champ cow at Pittsworth Feature show this year. Broken in and very quiet, a heifer that loves contact with people. Sells unjoined.

Purchaser.....Price \$.....

July 2017 Red Angus GROUP BREEDPLAN: EBV AVG: GL -0.6 BW +2.8 200 +26 400 +40 600 +54 MCW +53 MK +11 SS +0.9 EMA +1.2 RIB -0.2 RUMP -0.5 RBV +0.6 IMF -0.1									
---	--	--	--	--	--	--	--	--	--

49

BOONYOUIN MIA M66 MAKM66

BORN: 02/12/2016

TATTOO: MAKM66

AGE: 9 months

Vendor: MARYANNE KEARNEY

RED NORTHLINE FAT TONY 605U (AMF) (MAF) (OSF)

SIRE: BOONYOUIN HIT MAN H7 (ET) (AI) (AMF) (MAF) (NHF) (OSF) MAKH7

TREVONE PARK TRIX B2 (ET) (AI)

DONNA-LYNN DOMINATOR (AMF) (MAF) (NHF) (OSF)

DAM: BOONYOUIN GRACE G66 MAKG66

BST TULLATOOLA SHIRAX C46 (AI)

	GL	BW	200	400	600	MCW	MILK
EBV	-0.3	+3.6	+27	+37	+54	+50	+11
Acc	34%	52%	58%	53%	50%	37%	34%
	SS	CW	EMA	RIB	Rump	RBV	IMF
	+0.7	+31		-0.1	-0.3	+0.8	+0.0
	27%	41%		34%	34%	31%	26%

Treatments	
3 day	
7 in 1	✓
Tick Fever	



**Notes:**  
A well put together, stylish young heifer, by my Fat Tony stud sire and out of a productive Dominator cow, who goes back to Approval. Mia has a placid temperament and was a breeze to break in and handle.

Purchaser.....Price \$.....

July 2017 Red Angus GROUP BREEDPLAN: EBV AVG: GL -0.6 BW +2.8 200 +26 400 +40 600 +54 MCW +53 MK +11 SS +0.9 EMA +1.2 RIB -0.2 RUMP -0.5 RBV +0.6 IMF -0.1
--

DONATION LOT - EMBRYOS

PROCEEDS TO THE POWER OF RED SALE

**50A** RED LAZY MC CC DETOUR 2W (AMF) (MAF) (NHF) (OSF)  
X TREVONE PARK WHISPER A8  
Donated by Triple M  
package of 2 embryos

RED RMJ REDMAN 1T  
**SIRE: RED LAZY MC CC DETOUR 2W (AMF) (MAF) (NHF) (OSF) CANM1494226**  
RED LAZY MC BESS 12S

RED BAR-E-L APPROVAL 4L  
**DAM: TREVONE PARK WHISPER A8 VDMA8**  
IBR RED WHISPER N513

**Notes:**  
Package of 2 embryos sold on a per embryo basis.  
Embryos are out of the renowned Whisper line and are by Red Lazy MC CC Detour 2W. Semen in this bull is hard to come by. We are very excited about the prospects of what this joining may bring.

Lot 50A Purchaser.....Price \$.....

**50B** RED NORTHLINE IGNITION 125W (MAF) (OSF)  
X IBR RED CHERRY Y649 IBRY649  
Donated by Greenwood Park  
package of 2 embryos

RED NORTHLINE REV 341R  
**SIRE: RED NORTHLINE IGNITION 125W (MAF) (OSF) CANM1537388**  
RED JAYDERNE NADINE 7N

KANSAS RED AMAZON U93  
**DAM: IBR RED CHERRY Y649 IBRY649**  
IBR RED CHERRY S552

**Notes:**  
Package of 2 embryos sold on a per embryo basis.  
Here’s a chance to get your hands on some IBR Red Cherry progeny. Well known around here, ‘Grace’ has worked well with many different bulls and has 30 registered progeny. In this joining, she is joined to Northline Ignition. Dam of Lot 1 in this sale is a full flush sibling to this Lot.

Lot 50B Purchaser.....Price \$.....

July 2017 Red Angus GROUP BREEDPLAN: EBV AVG: GL -0.6 BW +2.8 200 +26 400 +40 600 +54 MCW +53 MK +11 SS +0.9 EMA +1.2 RIB -0.2 RUMP -0.5 RBY +0.6 IMF-0.1
--



**International**  
Animal Health Products  
THE AUSTRALASIAN COMPANY

IAH Sales Pty. Ltd. 18 Healey Circuit, Huntingwood NSW 2148 Australia

**Freecall: 1800 801 201 Ph: 02 9672 7944**

Fax: 02 9672 7988 Email: [info@iahp.com.au](mailto:info@iahp.com.au) Website: [www.iahp.com.au](http://www.iahp.com.au)

## Ausmectin Cattle Pour-On

# The convenience of a pour-on...

## Ausmectin® Cattle Pour-on - Ivermectin 5mg/mL

- Control/treatment of ivermectin sensitive internal and external parasites.
- Dose rate: 1mL per 10kg of body weight.
- Excellent residual protection against parasitic reinfestation.
- Effective in control of: gastrointestinal roundworms, lungworms, eyeworms, sucking and biting lice, sarcoptic and chorioptic mange mites, buffalo fly and cattle ticks.  
*(see label and enclosed leaflet for details).*
- Withholding:  
Meat 42 days;  
Milk: NIL.



*Available in 250mL pack, 1L applicator packs, 2.5L backpacks, 5L backpacks and 20L packs.*

# EMBRYOS

51

**DMM CREED 75W (BLACK RC) (AMF) (MAF) (NHF) (OSF)**  
CANM1526335

**X RED NORTHLINE CREAM SODA 241X (AMF) (MAF) (NHF)**  
CANF1588169

Vendor: G & K ISEPPI  
Stored at: Select Genetics

GUMBO GULCH CREED 94S (BLACK)  
**SIRE: DMM CREED 75W (BLACK RC) (AMF) (MAF) (NHF) (OSF) CANM1526335**  
RED DMM ESSENCE 156P

RED NORTHLINE CRUSH 59R  
**DAM: RED NORTHLINE CREAM SODA 241X (AMF) (MAF) (NHF) CANF1588169**  
RED NORTHLINE REBA 341S



## Notes:

Selling two packages of 3 embryos out of the 2012 American National Senior Champion female Northline Cream Soda 241X. 241X was a standout two year old when Gavin saw her in Canada. These embryos are sired by the awesome Black Red Carrier Sire DMM Creed 75W who was named Farmfair and Agribition Champion and sired the 2017 Sydney Royal Hordern Trophy winning Bull for RDM. The resulting calves can be registered HBR in both the Angus Society of Australia and the Red Angus Society of Australia as both parents are dual registered. We have some outstanding full siblings (both Red and Black) that we weaned here at GK in 2017.

Lot 51B Purchaser.....Price \$.....

Lot 51B Purchaser.....Price \$.....

July 2017 Red Angus GROUP BREEDPLAN: EBV AVG: GL -0.6 BW +2.8 200 +26 400 +40 600 +54 MCW +53 MK +11 SS +0.9 EMA +1.2 RIB -0.2 RUMP -0.5 RBY +0.6 IMF -0.1
---

52

**RED COCKBURN RIBEYE 308U (AMF) (MAF) (NHF) (OSF) CANM1481951**

**X BST TULLATOOLA DORIS A89 (BLACK RC) BSTA089**

**Vendor:** TRIPLE M RED ANGUS  
**Stored at:** United Cattle Breeders, Allora

RED BAR-E-L RIBEYE 103R  
**SIRE: RED COCKBURN RIBEYE 308U (AMF) (MAF) (NHF) (OSF) CANM1481951**  
RED WILBAR CORA 443P

BST TULLATOOLA SON OF ROB X36 BSTX036  
**DAM: BST TULLATOOLA DORIS A89 (BLACK RC)**  
FORRES DORIS X61 (BLACK)



**Notes:**  
Package of 3 embryos sold on a per embryo basis.  
This is a great opportunity to acquire some outcross genetics. Doris is a black red gene carrier who is long bodied and well balanced. Crossed with Ribeye, who is a clean footed bull with an enormous capacity the progeny will be outstanding These embryos have a 50% chance of being red and a 50% chance of being black red carriers. A recent son of Doris sold for \$10,000 privately at Sydney Royal Red Angus Feature Show.

Purchaser.....Price \$.....

July 2017 Red Angus GROUP BREEDPLAN: EBV AVG: GL -0.6 BW +2.8 200 +26 400 +40 600 +54									
MCW +53 MK +11 SS +0.9 EMA +1.2 RIB -0.2 RUMP -0.5 RBY +0.6 IMF-0.1									

53

RED DKF RAZOR 55C

X TRIPLE M MOROJITTI J79 (ET) (AI) MMMJ79

Vendor: TRIPLE M RED ANGUS  
Stored at: United Cattle Breeders, Allora

DKF ELIMINATOR 15A  
SIRE: RED DKF RAZOR 55C  
DKF MISS NET WORTH 21A

RED BAR-E-L APPROVAL 4L  
DAM: TRIPLE M MOROJITTI J79 (ET) (AI) MMMJ79  
WATERFRONT X158



**Notes:**  
Package of 3 embryos sold on a per embryo basis.  
Morojitti J79 is developing into one of our best donor cows here at Triple M. She is by the ever-proven Approval. Razor is an outstanding new young sire. He is a complete outcross for the Red Angus breed. He is heavy muscled with excellent balance and overall eye appeal. This joining will produce something very exciting!

Purchaser.....Price \$.....

July 2017 Red Angus GROUP BREEDPLAN: EBV AVG: GL -0.6 BW +2.8 200 +26 400 +40 600 +54									
MCW +53 MK +11 SS +0.9 EMA +1.2 RIB -0.2 RUMP -0.5 RBY +0.6 IMF -0.1									

54

RED NORTHLINE FAT TONY 605U CANM1462961  
X TREVONE PARK WHISPER A8 VDMA8

Vendor: TRIPLE M RED ANGUS  
Stored at: United Cattle Breeders, Allora

RED SVR GANGSTER 14S  
SIRE: RED NORTHLINE FAT TONY 605U CANM1462961  
RED NORTHLINE RUBY 0305N

RED BAR-E-L APPROVAL 4L  
DAM: TREVONE PARK WHISPER A8 VDMA8  
IBR RED WHISPER N513



**Notes:**  
Package of 3 embryos sold on a per embryo basis.  
Whisper A8 is an award winning female and still today stands in the paddock as a sound 12 year old female. She is a magnificent donor cow.  
Fat Tony needs no introduction, being the 2011 US National Champion Bull with breeding success both here and overseas. To date we have had 2 bulls to this joining. Both have been easy to market.

Purchaser.....Price \$.....

July 2017 Red Angus GROUP BREEDPLAN: EBV AVG: GL -0.6 BW +2.8 200 +26 400 +40 600 +54									
MCW +53 MK +11 SS +0.9 EMA +1.2 RIB -0.2 RUMP -0.5 RBV +0.6 IMF-0.1									



55  
RED SSS SOLDIER 365W (AMF) (MAF) (NHF) (OSF)  
CANM1533473  
X DONNA-LYNN RED CHERRY J8 1YNJ8

Vendor: GWF INVESTMENTS PTY LTD  
Stored at: United Cattle Breeders, Allora

RED SVR KNIGHT 236T  
SIRE: RED SSS SOLDIER 365W (AMF) (MAF) (NHF) (OSF) CANM1533473  
RED SSS BELLE 342S

RED NORTHLINE IGNITION 125W  
DAM: DONNA-LYNN RED CHERRY J8 1YNJ8  
IBR RED CHERRY Y649



**Notes:**  
Package of 4 frozen embryos, sold on a per embryo basis, guarantee 50% (conditions apply). Like the look of Lot 1 in this sale? Well here's your chance to breed your own. There are very few straws of the now deceased Soldier left in Australia. We were fortunate with some good flush results and are proud to offer these embryos for sale.

Purchaser.....Price \$.....

July 2017 Red Angus GROUP BREEDPLAN: EBV AVG: GL -0.6 BW +2.8 200 +26 400 +40 600 +54									
MCW +53 MK +11 SS +0.9 EMA +1.2 RIB -0.2 RUMP -0.5 RBY +0.6 IMF-0.1									

56

RED WPRA LEGACY A-314 (AMF) (MAF) (NHF) (OSF)  
CANM1777454  
X TREVONE PARK TRIX E24 VDME24

Vendor: GWF INVESTMENTS PTY LTD  
Stored at: United Cattle Breeders, Allora

RED LAZY MC EYE SPY 64Y  
SIRE: RED WPRA LEGACY A-314 (AMF) (MAF) (NHF) (OSF) CANM1777454  
RED WPRA EVERLEDA ENTENSE 610

TREVONE PARK HUNTER B31 (ET) (AI)  
DAM: TREVONE PARK TRIX E24 VDME24  
TREVONE PARK TRIX B2 (ET) (AI)



**Notes:**  
Package of 4 frozen embryos, sold on a per embryo basis, guarantee 50% (conditions apply). Legacy is an exciting new sire by Lazy MC Eye Spy and out of the Sitz Everelda Entense female line. He already has 200 Canadian progeny and EPDs in the top 1% for EMA & Marbling with excellent growth milk & yield traits. In this embryo package, he is joined to Trevone Park Trix E24. We said last year that Trix E24 is a super productive cow from Trevone Park who has calved every year, even after some very tough years, she has not missed a beat. This year she performed once again, giving us an excellent flush result after calving a beautiful Juggernaut heifer. That performance & reliability, crossed with this young sire should yield some exciting results.

Purchaser.....Price \$.....

July 2017 Red Angus GROUP BREEDPLAN: EBV AVG: GL -0.6 BW +2.8 200 +26 400 +40 600 +54									
MCW +53 MK +11 SS +0.9 EMA +1.2 RIB -0.2 RUMP -0.5 RBV +0.6 IMF-0.1									

57

## RED LAZY MC TROOPER 21Y (AMF) (MAF) (NHF) (OSF) CANM1639504

BORN: 08/02/2011

TATTOO: CANM1639504

Vendor: G & K ISEPPI

Stored at: Select Genetics

RED SVR KNIGHT 236T

SIRE: RED SSS SOLDIER 365W (AMF) (MAF) (NHF) (OSF) CANM1533473

RED SSS BELLE 342S

RED RMJ REDMAN 1T (MAF) (OSF)

DAM: LAZY MC EXPRESS 60W (BLACK RC) CANF1528320

STEWART EXPRESS 304N (BLACK RC)

	GL	BW	200	400	600	MCW	MILK
EBV	-2.0	+0.7	+21	+37	+49	+29	
Acc	80%	87%	73%	64%	63%	43%	
	SS	CW	EMA	RIB	Rump	RBV	IMF
		+35		+0.1	+0.0		
		42%		26%	26%		



### Notes:

2 packages of semen, stored at Select Genetics. Named the 2014 U.S. National Champion Red Angus bull, Trooper consistently offers moderate birth weights, and great feet combined with solid performance. Trooper has bred extremely well over big cows and has been a go-to bull for sleep easy use over maiden heifers. Trooper sired the winning progeny group, the Junior Champion Heifer and the Junior, Senior and Grand Champion bulls at the 2016 Brisbane Royal Show. A son GK Red Kulcha Shoc K23 was top price bull in last year's Power of Red II Sale selling for \$16,000 and another son was senior champion and sold for \$18,000 at the 2017 RANSS to the Powe family. This will be the last release of Trooper semen from GK.

Lot 57A 4 straws Purchaser.....Price \$.....

Lot 57B 6 straws Purchaser.....Price \$.....

July 2017 Red Angus GROUP BREEDPLAN: EBV AVG: GL -0.6 BW +2.8 200 +26 400 +40 600 +54  
MCW +53 MK +11 SS +0.9 EMA +1.2 RIB -0.2 RUMP -0.5 RBV +0.6 IMF -0.1

# **United Cattle Breeding Service**

**P.O. Box 43, 71 Haigs Rd,  
ALLORA QLD 4362.**

**Ph: 07 4666 3376**

**Fax: 07 4666 3334**

**Email: [ucbsone@gmail.com](mailto:ucbsone@gmail.com)**

**Contact: John Atkinson  
or Johnny Osborne  
for**

**AUSTRALIAN & IMPORTED  
SEMEN SUPPLIES**

**AI EQUIPMENT**

**TANK & SEMEN STORAGE**

**LIQUID NITROGEN SALES &  
ON FARM DELIVERY**



**Contact: Peter Atkinson BVSc**

**Mob: 0428 721 300**

**Email: [pcatkinson@bigpond.com](mailto:pcatkinson@bigpond.com)  
for**

**Embryo Transfer & AI Programs**

**Custom Semen Collection**

**Reproductive Ultrasonography**

- Early pregnancy diagnosis**
- Foetal sexing**

58

GK 26 FEDERER F23 (AI) (AMF) (MAF) (NHF)  
(OSF) GK F23

BORN: 20/09/2010TATTOO: GK F23

Vendor: G & K ISEPPI

Stored at: Select Genetics

RED COMPASS MULBERRY 449M

SIRE: RED FINE LINE MULBERRY 26P (AMF) (MAF) (OSF) CANM1237972  
RED DUS FAYETTE 8G

RED BVR RAB-STAR 56C (MAF)

DAM: IBR RED BELLA R512 (ET) (AI) (MAF) IBRR512  
IBR RED BELLA N512 (ET) (AI)

	GL	BW	200	400	600	MCW	MILK
EBV	+1.2	+3.7	+35	+56	+75	+81	+11
Acc	87%	92%	85%	80%	78%	64%	61%
	SS	CW	EMA	RIB	Rump	RBV	IMF
	+1.3	+53	+1.0	-1.0	-1.5	+1.1	+0.0
	45%	65%	45%	58%	58%	54%	52%



Notes:

2 packages of 6 straws, sold on a per straw basis.

Federer is a current triple trait leader for 200, 400 and 600 day weight on group breedplan. Due to the sudden loss of Federer, semen has been taken off the open market and is in limited supply. Federer was a natural calf, raised by his dam at 15 years of age. He was an awesome natured, low maintenance bull. He won Supreme Beef Bull at the 2012 Brisbane Royal Show under 22 judges. He was a member of the Hordern Trophy Supreme Beef Pair at Sydney Royal and Supreme Beef Bull at Melbourne Royal all in the same year.

Lot 58A Purchaser.....Price \$.....

Lot 58B Purchaser.....Price \$.....

July 2017 Red Angus GROUP BREEDPLAN: EBV AVG: GL -0.6 BW +2.8 200 +26 400 +40 600 +54 MCW +53 MK +11 SS +0.9 EMA +1.2 RIB -0.2 RUMP -0.5 RBV +0.6 IMF -0.1
---

59

RED NORTHLINE FAT TONY 605U (AMF) (MAF)  
(OSF) CANM1462961

BORN: 18/04/2008TATTOO: CANM1462961

Vendor: G & K ISEPPI

Stored at: Select Genetics

RED GEIS HI HO 180'04

SIRE: RED SVR GANGSTER 14S (AMF) (MAF) (OSF) CANM1328810  
RED DWAJO DUCHESS 75M

RED NORTHLINE ROB ROY 122K (MAF) (OSF)

DAM: RED NORTHLINE RUBY 0305N CANF1483698  
RED NORTHLINE RUBY 305K

	GL	BW	200	400	600	MCW	MILK
EBV	-0.5	+1.5	+15	+24	+36	+9	+10
Acc	80%	90%	79%	76%	74%	55%	40%
	SS	CW	EMA	RIB	Rump	RBV	IMF
	+0.3	+22	+1.8	+0.9	+1.1	+0.2	+0.6
	63%	57%	38%	53%	53%	48%	46%



**Notes:**  
2 packages of 6 straws, sold on a per straw basis, stored at Select Genetics. Northline Fat Tony is bull with an amazing phenotype and was named the 2011 U.S National Champion Red Angus Bull at Denver. He is a low birthweight sire who will put power and muscle mass into his progeny, along with amazing temperaments, high EMA’s and high IMF, (2 traits that are usually negatively correlated.) Fat Tony sired the top price bull at both the 2015 and 2016 Red Angus National Show and Sale.

Lot 59A Purchaser.....Price \$.....

Lot 59B Purchaser.....Price \$.....

July 2017 Red Angus GROUP BREEDPLAN: EBV AVG: GL -0.6 BW +2.8 200 +26 400 +40 600 +54 MCW +53 MK +11 SS +0.9 EMA +1.2 RIB -0.2 RUMP -0.5 RBV +0.6 IMF-0.1
--

60

RED NORTHLINE CHUCK NORRIS 305X (AMF)  
(MAF) (NHF) (OSF) CANM1588175

BORN: 02/05/2010TATTOO: CANM1588175

Vendor: G & K ISEPPI

Stored at: Select Genetics

RED GEIS HI HO 180'04

SIRE: RED SVR GANGSTER 14S (AMF) (MAF) (OSF) CANM1328810  
RED DWAJO DUCHESS 75M

RED PIE ATLANTIC 2204 (MAF) (OSF)

DAM: RED NORTHLINE QUEEN 305S CANF1588167  
RED NORTHLINE RUBY 305D

	GL	BW	200	400	600	MCW	MILK
EBV	-0.2	+2.8	+20	+35	+47	+29	
Acc	40%	58%	51%	45%	42%	28%	
	SS	CW	EMA	RIB	Rump	RBV	IMF
		+29		+0.8	+0.9		
		31%		26%	26%		



Notes:

1 package of 5 straws, sold on a per straw basis.

Very limited semen came into Australia on this eye appealing sire. Chuck Norris was a 3 time division champion in Denver at the National Western Stock Show. Chuck Norris is breeding well and included in his progeny are the 2016 Adelaide Royal Grand Champion Bull and the 2017 Sydney Royal Senior Champion bull for the Jordan Family.

Purchaser.....Price \$.....

61

WOLLUMBI HI STAR H53 (ET) (AI) (AMF) (MAF)  
(NHF) (OSF) PWWH53

BORN: 02/09/2012TATTOO: PWWH53

Vendor: G & K ISEPPI

Stored at: Select Genetics

RED CUMNOCK STAR 139Z

SIRE: RED BVR RAB-STAR 56C (MAF) CANM760245

RED TIARA OF TAG-A-LONG 57T

BUF CRK BARNEY 3474 (MAF) (OSF)

DAM: WATERFRONT X159 (ET) (AI) HRHX159

BARAMUL MOROJITTI (ET) (AI) (MAF)

	GL	BW	200	400	600	MCW	MILK
EBV	-2.1	+3.3	+28	+39	+52	+61	+6
Acc	61%	79%	71%	69%	66%	54%	52%
	SS	CW	EMA	RIB	Rump	RBV	IMF
	+1.4	+28	+0.6	-1.1	-1.7	+1.0	-0.5
	63%	57%	42%	50%	50%	47%	43%



**Notes:**  
2 lots of 10 straws, sold on a per straw basis, stored at Select Genetics. Hi Star H53 was the 2014 Sydney Royal Show Supreme Beef Bull and a member of the 2014 Hordern Trophy winning pair. He was named Supreme Beef Bull at Brisbane in the same year after winning the National Show and Sale and selling for the record National Red Angus Bull price of \$22,000. Hi Star was an extremely good natured bull who we unfortunately lost well before his time due to snakebite and it was for this reason we have held his semen off the market due to limited supply. A son was Junior Champion Bull at the 2017 Qld Red Angus Feature Show for Kellie Smith and another was Reserve Senior Champion at Sydney 2017 for Yallambee. Hi Star was a phenotypically magnificent bull, which combined well with his very consistent old pedigree.

Lot 61A 10 straws Purchaser.....Price \$.....

Lot 61B 10 straws Purchaser.....Price \$.....

July 2017 Red Angus GROUP BREEDPLAN: EBV AVG: GL -0.6 BW +2.8 200 +26 400 +40 600 +54 MCW +53 MK +11 SS +0.9 EMA +1.2 RIB -0.2 RUMP -0.5 RBV +0.6 IMF -0.1							
---	--	--	--	--	--	--	--



62

RED SSS BOOMER 803B (AI) (MAF) CANM738248

BORN: 29/01/1992TATTOO: CANM738248

Vendor: G & K ISEPPI

Stored at: Select Genetics

RED CV FOUR TIMES

SIRE: FCC RAMBO 502 (OSF) USAM181728

COPPER LASS 2392

RED SSS HIGH LINE 402M

DAM: RED SSS MISS HIGH LASS 352X CANF662094

RED SSS FIRST-CLASS LASS 46T

	GL	BW	200	400	600	MCW	MILK
EBV	-0.7	+2.6	+25	+37	+47	+52	+10
Acc	76%	90%	87%	86%	85%	76%	84%
	SS	CW	EMA	RIB	Rump	RBV	IMF
	+1.3	+29	+0.8	-0.5	-1.0	+0.4	-0.1
	51%	75%	58%	62%	59%	56%	57%



Notes:

1 package of 6 straws, stored at Select Genetics.

Red SSS Boomer 803B is a legendary old sire who requires no introduction. He is a bull that sired both excellent bulls and female progeny. Some of the best old cows to come out of North America were sired by Boomer and he had some amazing progeny in the Moorefields, RRA and Trevone Park herds in Australia. One of our foundation cow families at GK (the Maple family) goes back to our big old Boomer cow GK Red Maple Z13. She was the dam of the 2011 Sydney Grand Champion Female Maple D11 and Brisbane 2015 Junior Champion Heifer Maple K19.

Purchaser.....Price \$.....

63

RED LAZY MC HOLLYWOOD 127C

BORN: 24/02/2015

TATTOO: CANM1889374

Vendor: TRIPLE M RED ANGUS

Stored at: United Cattle Breeders, Allora

TER-RON PARK PLACE 18Y (BLACK RC)

SIRE: RED TER-RON PARKER 34A (AMF) (MAF) (NHF) (OSF)

RED TER-RON DIAMOND MIST 164Y

RED LAZY MC LOOKOUT 153X

DAM: RED LAZY MC FIREFLY 36Z CANF1700032

RED LAZY MC MISS FIREFLY 31S



Notes:

Offering 3 lots of 10 straws sold on a per straw basis.

These three packages will be the only semen available in Hollywood in 2017....so here is your opportunity to get in on the ground floor!!

Hollywood is sired by Red Ter-Ron Parker with his outcross pedigree tracing back to HF Tiger and Kodiak. Hollywood’s dam is Red Lazy MC Firefly 36Z. She has a huge body shape, great feet and an excellent udder.

She is an exciting donor! With these genetics behind him, Hollywood is sure to add to your program.

- Lot 63 A   Purchaser..... Price \$.....
- Lot 63 B   Purchaser..... Price \$.....
- Lot 63 C   Purchaser..... Price \$.....

July 2017 Red Angus GROUP BREEDPLAN: EBV AVG: GL -0.6   BW +2.8   200 +26   400 +40   600 +54									
MCW +53   MK +11   SS +0.9   EMA +1.2   RIB -0.2   RUMP -0.5   RBV +0.6   IMF-0.1									

64

RED COCKBURN RIBEYE 308U (AMF) (MAF) (NHF)  
(OSF) CANM1481951

BORN: 25/01/2008TATTOO: CANM1481951

Vendor: TRIPLE M RED ANGUS

Stored at: United Cattle Breeders, Allora

RED TER-RON DIGGER 11L

SIRE: RED BAR-E-L RIBEYE 103R (OSF) CANM1277872

RED BAR-E-L MARCIE 50N

RED TER-RON TORNADO 157M

DAM: RED WILBAR CORA 443P CANF1206114

RED HEAD CORA 159L



Notes:

Offering 2 lots of 6 straws, sold on a per straw basis.

We had the pleasure of inspecting Ribeye at Wild Cat Creek Ranch, Kansas in Jan 2015 as a rising 7 year old sire. We were very impressed with his enormous capacity and length which was held together with great structure on top of fabulous feet and legs. His dam was just as eye catching out in the pasture. We are extremely pleased with his calves here at Triple M. We look forward to some of these joining the Triple M Show Team in 2018. His semen will not be available on the open market.

Lot 64A Purchaser.....Price \$.....

Lot 64B Purchaser.....Price \$.....

July 2017 Red Angus GROUP BREEDPLAN: EBV AVG: GL -0.6 BW +2.8 200 +26 400 +40 600 +54									
MCW +53 MK +11 SS +0.9 EMA +1.2 RIB -0.2 RUMP -0.5 RBY +0.6 IMF-0.1									

65

RED NORTHLINE REV 341R (MAF) CANM1334173

BORN: 14/02/2005TATTOO: CANM1334173

Vendor: TRIPLE M RED ANGUS

Stored at: United Cattle Breeders, Allora

RED WILD ROSE ROBIN HOOD 11F

SIRE: RED NORTHLINE ROB ROY 122K (MAF) (OSF) CANM1035334

RED BAR EL SYBIL 122E

RED NORTHLINE KING 305J

DAM: RED NORTHLINE GEM 341N CANF1186290

RED NORTHLINE QUEEN 240H

	GL	BW	200	400	600	MCW	MILK
EBV	+2.2	+6.4	+33	+43	+66	+55	+13
Acc	64%	77%	65%	59%	62%	46%	40%
	SS	CW	EMA	RIB	Rump	RBV	IMF
	+0.5	+34	+0.7	-0.4	-0.6	+0.7	+0.1
	47%	42%	29%	34%	34%	32%	31%



Notes:

Offering 10 straws, sold on a per straw basis.

2007 Canadian National Champion Bull and sire of Northline Ignition 25W the 2010 NILE Champion Bull. Northline Angus market this bull as the maternal king and he has been described as one of the elite maternal sires in the breed.

Purchaser.....Price \$.....

66

RED NORTHLINE IGNITION 125W (MAF) (OSF)

CANM1537388

BORN: 03/05/2009TATTOO: CANM1537388

Vendor: TRIPLE M RED ANGUS

Stored at: United Cattle Breeders, Allora

RED NORTHLINE ROB ROY 122K (MAF) (OSF)

SIRE: RED NORTHLINE REV 341R (MAF) CANM1334173

RED NORTHLINE GEM 341N

RED JAYDERNE JACOB 14J

DAM: RED JAYDERNE NADINE 7N CANF1168079

RED JAYDERNE GOLDIE 49G

	GL	BW	200	400	600	MCW	MILK
EBV	+3.0	+6.5	+32	+45	+66	+48	+11
Acc	55%	73%	57%	49%	51%	35%	31%
	SS	CW	EMA	RIB	Rump	RBV	IMF
		+36					
		27%					



Notes:

Offering 10 straws, sold on a per straw basis.

Ignition was the 2010 US N.I.L.E Grand Champion Bull. He is a massive, deep ribbed bull with plenty of muscle and knock out performance He will add frame and milk to his progeny.

Purchaser.....Price \$.....

July 2017 Red Angus GROUP BREEDPLAN: EBV AVG: GL -0.6 BW +2.8 200 +26 400 +40 600 +54									
MCW +53 MK +11 SS +0.9 EMA +1.2 RIB -0.2 RUMP -0.5 RBV +0.6 IMF-0.1									

67

RED LAZY MC FORUM 223Y (AMF) (MAF) (NHF)  
(OSF) CANM1658228

BORN: 21/02/2011TATTOO: CANM1658228

Vendor: TRIPLE M RED ANGUS

Stored at: United Cattle Breeders, Allora

5L NORSEMAN KING 2291 (MAF) (OSF)

SIRE: RED RMJ REDMAN 1T (MAF) (OSF) CANM1415715

CROWFOOT KURUBA 4033P (BLACK RC)

RED LAZY MC SMASH 41N (OSF)

DAM: RED LAZY MC BESS 12S (NHF) CANF1343849

RED LAZY MC BESS 73N

	GL	BW	200	400	600	MCW	MILK
EBV	-2.2	+0.9	+19	+34	+39	+31	+9
Acc	60%	74%	68%	62%	60%	47%	28%
	SS	CW	EMA	RIB	Rump	RBV	IMF
	+1.1	+28	+2.0	+0.6	+0.6	+0.2	+0.5
	38%	47%	30%	39%	39%	36%	34%



Notes:

Offering 10 straws, sold on a per straw basis.

We inspected Forum as a young sire whilst in Canada in 2012. We were really impressed with his structure, his length and his feet. He has now matured into a magnificent sire and is a bull that is extremely suitable for use over heifers.

Purchaser.....Price \$.....

July 2017 Red Angus GROUP BREEDPLAN: EBV AVG: GL -0.6 BW +2.8 200 +26 400 +40 600 +54 MCW +53 MK +11 SS +0.9 EMA +1.2 RIB -0.2 RUMP -0.5 RBV +0.6 IMF-0.1
--

68

RED DMM GLESBAR BARNDANCE (AMF) (MAF) (NHF)  
(OSF) CANM1585866

BORN: 23/01/2010TATTOO: CANM1585866

Vendor: CROOBLE PASTORAL CO

Stored at: Goondiwindi & District Veterinary Services

PERKS ADVANCE 121R (OSF)

SIRE: RED DMM PUMP 118T CANM1425187  
DMM MIS ESSENCE 112H (BLACK RC)

RED DMM TRACTION 98R

DAM: RED GLESBAR LEAH 029U (MAF) CANF1428614  
RED GLESBAR LEAH 96L

	GL	BW	200	400	600	MCW	MILK
EBV	+0.8	+3.6	+19	+23	+31	+28	+8
Acc	69%	87%	68%	61%	66%	47%	27%
	SS	CW	EMA	RIB	Rump	RBV	IMF
	+1.0	+15	+1.0	-1.0	-1.5	+1.3	-0.6
	37%	43%	31%	40%	40%	36%	31%



Notes:

Offering 5 straws, sold on a per straw basis.

Barndance was the 2012 Canadian Show Bull of the Year, winning Supreme Champion at Farmfair in 2012 and Grand Champion Red Angus Bull at Agribition in the same year. Barndance’s progeny have been performing extremely well in Australia. Crooble Past Co was very proud to breed the successful Barndance son, Crooble Kandance CPCK08, who sold at the 2016 Sydney Royal for \$8,000. Barndance progeny have good temperaments and are doing an excellent job in the paddock. If you want to add some outcross genetics with power, volume, soundness, and that “Championship Look”, bring Barndance to your herd!

Purchaser.....Price \$.....

July 2017 Red Angus GROUP BREEDPLAN: EBV AVG: GL -0.6 BW +2.8 200 +26 400 +40 600 +54 MCW +53 MK +11 SS +0.9 EMA +1.2 RIB -0.2 RUMP -0.5 RBV +0.6 IMF -0.1
---

Mixed semen lot

Vendor: GREG & MELINDA HOEY  
Stored at: United Cattle Breeders, Allora

- 2 straws of RED JD LANN BONAFIDE 119N (MAF) CANM1153584
- 3 straws of RED PIE GAME ON 9109 (AMF) (MAF) (NHF) (OSF) CANM1348599
- 2 straws of GLACIER CHATEAU 744 (OSF) USAM557331
- 3 straws of TREVONE PARK KING PIN (ET) (AI) VDMY25



Bonafide 119N



Game On 9109

**Notes:**  
Sold on a per straw basis.  
Some very good, proven genetics in this mixed semen lot.

Purchaser.....Price \$.....

July 2017 Red Angus GROUP BREEDPLAN: EBV AVG: GL -0.6 BW +2.8 200 +26 400 +40 600 +54									
MCW +53 MK +11 SS +0.9 EMA +1.2 RIB -0.2 RUMP -0.5 RBY +0.6 IMF-0.1									

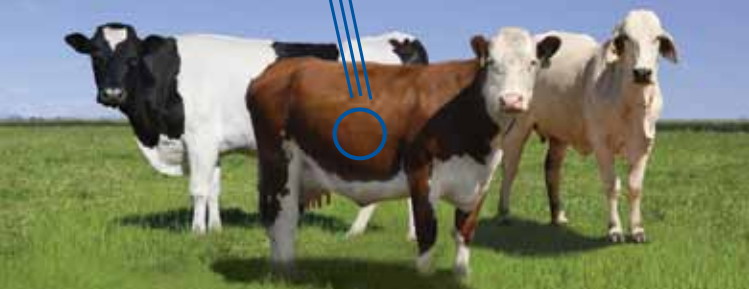


# GET BREEDERS PERFORMANCE READY

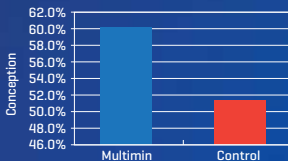
IMPROVE CONCEPTION RATES

BETTER EMBRYO SURVIVAL

TIGHTER CALVING INTERVAL



## FOR INCREASED FERTILITY, CONCEPTION & PRODUCTIVITY



Multimin provided cattle with a significant improvement in fertility<sup>2</sup>

### Scientifically proven results:

- ✓ 4 in 1 trace mineral injection
- ✓ Ideal for topping up breeders pre joining
- ✓ Rapid absorption<sup>2</sup> and accurate dosing



1. Mundell et al (2012), PAS, 28:82-88
2. Pogge et al (2012), J. Anim. Sci, 90:2692-2698

**Virbac**

Shaping the future of animal health

Customer Support: 1800 009 847

[virbac.com.au/multimin](http://virbac.com.au/multimin)



# LIVESTOCK AUCTION TERMS AND CONDITIONS OF SALE



## CHAPTER ONE - PRELIMINARY

1. (a) A vendor is bound by these terms and conditions by offering livestock for sale by auction.  
(b) An agent (which includes an auctioneer) is bound by these terms and conditions by conducting an auction sale.  
(c) A buyer is bound by these terms and conditions by bidding at auction.
2. (a) In these terms the expression auctioneer, agent, buyer and vendor respectively includes the servants, contractors, agents of each of them. The auctioneer, agent, buyer and vendor shall be wholly responsible for the acts and omissions of their respective servants, contractors and agents. The term "auctioneer" includes, so far as the law and context permits, the vendor's agent.  
(b) When used in these terms the expressions "companion animals" means all animals originating from the same property on a particular day. Where lots are split and sent to multiple establishments, then all of these animals shall be regarded as companions.
3. The following applies in interpreting these terms and conditions:
  - (a) The following words have the following meanings:  
Fees means all levies, charges, fees, costs and other expenses incurred or relating to these terms and conditions and the sale and purchase of livestock including, without limitation, transaction levies, yard and weigh dues, cartage, advertising and rebates, and whether paid for, or incurred, by the agent;  
Livestock means animals auctioned pursuant to these terms and conditions; and  
Price means the amount at which the lot has been sold to the buyer referred to in clause 7 of these terms and conditions  
(i) plus any Fees and other expenses incurred in relation to the purchase of livestock that are payable by the buyer; and  
(ii) plus any GST added in accordance with clause 12.  
(b) These terms and conditions are subject to legislation or regulation in the State in which the auction is conducted and in the event of any conflict then the legislation or regulation will prevail. The provisions of these terms and conditions are in addition to, and do not derogate from, the duties and rights of vendors, agents and buyers set out in legislation and regulation in the State in which the auction is conducted.

## CHAPTER TWO - STANDARD TERMS OF SALE

4. Subject to any reserve price, and to the right, prior to the fall of the hammer, of the vendor to withdraw any lot without declaring the reserve, the highest bidder shall be the buyer.
5. The auctioneer has the right to bid on behalf of the vendor provided that right is notified prior to the commencement of the sale and is subject to State law.
6. A bid cannot be made or accepted after the fall of the hammer unless, in accordance with clause 8, the auctioneer decides to put the lot up again.
7. The last price called by the auctioneer at the fall of the hammer shall be the amount at which the lot has been sold.
8. In the event of a disputed bid, the auctioneer is the sole arbitrator of the successful bidder or the auctioneer may decide to put the lot up again. The auctioneer's decision is final.
9. The auctioneer may refuse to accept any bid which, in the auctioneer's opinion, is not in the best interest of the vendor and need not give reasons for doing so.
10. A bidder shall be deemed to be a principal unless, prior to bidding, the bidder has given to the auctioneer a copy of written authority to bid for or on behalf of another person.
11. The successful bidder at a livestock auction sale must give to the auctioneer at the fall of the hammer:
  - (a) the purchaser's name; or
  - (b) the bid card number which identifies the purchaser; or
  - (c) the name of the person on whose behalf the successful bid was made; and
  - (d) the Property Identification Code (known as the "PIC") of destination.
12. The auction shall be conducted on the basis that the bid price shall be exclusive of Goods and Services Tax (GST). GST shall be added after the fall of the hammer for those sales subject to GST.
13. As soon as practicable after the fall of the hammer, the buyer shall if requested by the agent, sign the agreement for sale.
14. If a buyer does not comply with any of these terms and conditions, which includes the requirements of State law, any livestock knocked down to that buyer may be re-sold by public auction or private contract in whatever lots and manner the auctioneer decides. The re-sale may be with or without notice and shall be at the buyer's risk. The buyer is responsible for all loss and expense arising out of a re-sale and is not entitled to any resulting profit.
15. The buyer of livestock must pay the agent the full amount of the purchase price in immediate funds on receipt of a tax invoice. Payment is required prior to delivery unless some other time for payment is specified in a written agreement between the buyer and the auctioneer that was made before the fall of the hammer. If, before delivery, payment has not been made then clauses 20 to 23 apply.
16. No person may bid unless, prior to the commencement of the sale, that person has made arrangements satisfactory to the auctioneer for payment for livestock purchased. If bids in breach of this condition are inadvertently accepted, delivery shall not be given until the purchase money is paid and any law, rule or practice to the contrary is accordingly negated as far as possible.
17. (a) Cattle sold on a liveweight basis that are weighed pre-sale are at the risk and expense of the buyer upon the fall of the hammer.  
(b) Cattle sold on a liveweight basis that are weighed post-sale are at the risk and expense of the buyer immediately after weighing.  
(c) All livestock other than cattle sold on a liveweight basis are at the risk and expense of the buyer upon the fall of the hammer.
18. (a) Subject to this clause the sale is complete on the fall of the hammer.  
(b) The time for rejection is the time commencing at the fall of the hammer and ending at the first of:
  - (i) delivery is taken by a representative of the buyer;
  - (ii) departure of the animal from the purchaser's delivery pen; or
  - (iii) one hour after the last animal is:
    - a. in the case of pre-sale weighing, sold; or
    - b. in the case of post-sale weighing, weighed.  
(c) During the time for rejection the buyer may reject any animal which is lame, blind or diseased where that condition existed prior to the fall of the hammer but could not be reasonably observed when the animal was in the selling pen.  
(d) If the purchaser rejects an animal during the time for rejection then the sale of that animal is cancelled and the animal is returned to the vendor or sold on such terms as any buyer and the agent may agree, after the agent has disclosed the reason for rejection to that buyer.  
(e) This sub-clause applies only to cattle which are sold in Queensland at auction for slaughter. The agent has responsibility for the prevention of loss or escape (but not death, sickness or injury) of those cattle from the time of the fall of the hammer, through delivery to and from the scales, to the buyer's delivery pen and on to the buyer's nominated transport. This responsibility ends at the earlier of those cattle boarding the buyer's nominated transport or sunset on the day after the sale. This sub-clause does not apply if the agent makes an announcement to that effect prior to sale.
19. (a) Subject to the right of rejection in Clause 18, all conditions and warranties expressed or implied by law are hereby excluded from the sale to the extent that the law allows. All lots are open for inspection prior to the commencement of the sale and are sold with all faults, if any. No compensation shall be given for any faults, imperfections, errors of description, number in or of any lots sold or otherwise.  
(b) Any claim or objection arising out of an error or misdescription in the provision of relevant information in terms of legislation or regulation concerning the National Livestock Identification Scheme (NLIS) must be made by 5:00pm on

the seventh day after the fall of the hammer. No objection, requisition or claim against the vendor or agent in respect of such error or misdescription can be made after that time.

- (c) Any statements made by the vendor or the auctioneer whether in writing or orally to the effect that any female has been pregnancy tested or scanned positive shall mean and require only that a certificate in writing shall be supplied to the buyer signed by a qualified veterinary surgeon or certified scanner certifying that the said female has been tested or scanned on the date specified in the certificate and that in the opinion of the surgeon or scanner was pregnant on that date.
  - (d) For slaughter cattle, the agent undertakes to make every reasonable effort to ensure that any NLIS cattle device number is transferred from the saleyard PIC to the purchaser's PIC on the NLIS database no later than midnight on the day of the sale.
  - (e) For other slaughter livestock the agent undertakes to make every reasonable effort to ensure that the NLIS information is transferred from the saleyard PIC to the purchaser's PIC on the NLIS database no later than midnight on the day of the sale.
  - (f) Where livestock have a food safety or market eligibility status derived from the National Vendor Declaration (NVD) and/or the NLIS/ERP database, the agent will inform the buyers by presale catalogue and/or announce the status prior to the offering of those lots.
20. If delivery is made to, or possession obtained by, the buyer or its representative before full payment of the Price, then until full payment is received, the buyer:
- (a) does not acquire title to the livestock;
  - (b) holds the livestock as bailee only for the vendor;
  - (c) must act in a fiduciary capacity in its relationship with the vendor;
  - (d) must store the stock separately or so that they are readily distinguishable from other livestock owned by the buyer;
  - (e) is responsible for the safety and well being of the livestock;
  - (f) may make a bona fide sale for market value of any or all of the livestock. As between the buyer and the subsequent buyer, the sale shall be made by the buyer in its own name and not as agent for the vendor, however as between the vendor and buyer, the sale shall be made as bailee and agent for the vendor; and
  - (g) must keep and account for the proceeds of any subsequent sale separately from its other money and hold those proceeds, together with the benefits of any rights against subsequent buyers, on trust for the vendor.
21. In addition to clause 20, if payment is not made according to clause 15, but delivery has been made to, or possession obtained by, the buyer or its representative:
- (a) The vendor or its agent may repossess and resell the livestock and enter property owned or occupied by the buyer or its representative if necessary to do so; and
  - (b) Interest may be charged at the rate usually charged by the agent for overdue accounts on any amounts which remain owing at any time.
22. The buyer may not make any claim against the vendor for actions by the vendor or its agent under clauses 20 or 21 and indemnifies the vendor and its agent against any loss, damage, costs, expenses, penalties, fines or claims suffered by the vendor, the agent or any person or entity arising from the vendor exercising its rights under clauses 20 or 21.
- 23.1. Clause 23 applies whenever the agent pays the vendor before being paid by the buyer, which the agent is not bound to do. The agent is then the del credere agent of the vendor at law.
- 23.2. The vendor hereby gives notice to the buyer of the assignments referred to in clause 23.3.
- 23.3. When this clause applies, in addition to any rights of the agent that arise by operation of the law, the parties agree that, subject to clause 23.6 the agent is subrogated to all rights of the vendor under these terms and conditions against the buyer.
- 23.4. Title to the livestock does not pass to the agent or a nominee of the agent unless the agent, by written notice to the vendor, notifies the vendor that it is to be transferred to the agent or a nominee of the agent.
- 23.5. The vendor acknowledges that the agent may take enforcement, repossession or other action to recover any livestock for which the buyer has not paid in full, or the Price of such livestock, owing by the buyer under these terms and conditions:
- (a) when this clause does not apply, as agent of the vendor (including by reselling the livestock); and
  - (b) when this clause applies, on the agent's own behalf exercising the rights of the vendor by subrogation or assignment under these terms and conditions (whether in the vendor's name or not) and, where title to the livestock has not passed to the agent, by selling the livestock as agent of the vendor without the agent having to account to the vendor for the proceeds of sale.
- 23.6. The agent may at any time, assign, transfer, securitise or otherwise dispose of all or any of its rights under these terms and conditions and any debts created pursuant to it (including, without limitation, the rights assigned to it under clause 23.3).
- 23.7. The vendor hereby irrevocably appoints the agent as the vendor's attorney to:
- (a) do at any time and in any manner as the agent thinks fit all acts necessary or desirable to perfect or improve the rights and interests afforded, or intended to be afforded, to the agent under these terms and conditions; and
  - (b) appoint one or more sub-attorneys to do anything that the agent may do as the vendor's attorney.
- 23.8. These terms and conditions do not render the agent liable to the buyer as vendor nor entitle the buyer to set off against the agent any right the buyer may have against the vendor or otherwise.
- 23.9. The buyer acknowledges that the provisions of this clause 23 are intended solely for the benefit of the agent (and its assigns) and the vendor. The liabilities and obligations of the buyer will not be in any way affected:
- (a) by this clause 23, other than as it expressly provides; or
  - (b) by the failure of the agent or the vendor or either of them to comply with the terms of this clause 23.
- 23.10. The buyer must pay all amounts payable to the vendor or the agent under these terms and conditions without any deduction, withholding, set off or counterclaim whatsoever, whether the benefit of a deduction, withholding, set off or counterclaim is alleged to exist in favour of the buyer as against the vendor or the agent in any capacity whatsoever or any other person including any assignor of the vendor's or the buyer's interests under these terms and conditions.
24. (a) The agent agrees that he is liable to pay to the vendor the Price, less such commission as is agreed between the vendor and the agent, and in the absence of any agreement such amount as is reasonable, and less the Fees that are payable by the vendor that were incurred by the agent on behalf of the vendor in relation to the sale of the livestock.
- (b) In the event that the buyer pays the Price or part of it direct to the vendor then the agent has no liability to the vendor for the amount of such payment. Further, if the agent pays the vendor any amount which the buyer also pays direct to the vendor in respect of the same livestock, then the vendor must repay the agent that amount and the agent may debit that amount to an account held in the name of the vendor by the agent.
- (c) Regardless of whether or not a sale has occurred the agent may, but is not under obligation so to do, instead of deducting payments owed to it by the vendor, debit the amount of the commission and fees to an account held in the name of the vendor by the agent.
25. (a) The auctioneer has been retained by the vendor as auctioneer for the purpose of selling the livestock comprised in the lots. The terms of engagement between the auctioneer and the vendor do not extend to the provision of advice by the auctioneer to the vendor in relation to the safety or otherwise of the sale ring, the saleyards and the surrounding environments.
- (b) The vendor, the agent and the buyer agree to comply with their several duties under the Australian Animal Welfare Standards and Guidelines for the Land Transport of Livestock and further to consign, manage, receive, transport and handle livestock in accordance with any other or additional requirements of animal welfare legislation specific to the jurisdiction in which livestock are consigned, managed, received, transported and handled in the course of the auction process.

#### **CHAPTER THREE – VENDOR WARRANTY FOR CORRECT PRESENTATION AND DECLARATION**

26. This chapter applies only in the case of livestock and their companion animals sold at auction for slaughter when the buyer is the slaughterer and the livestock are transported direct from the sale yard to the meatworks at which they are slaughtered. This chapter does not apply if the buyer is a trader who subsequently resells the livestock to a slaughterer. A slaughterer is a person who pays the AMPC Processor levy.

27. The warranty of a vendor is that livestock and their companion animals offered for sale at auction:
  - (a) pass DAFF and other regulatory authority requirements and inspections at the time of slaughter; (DAFF refers to the Federal Government Department of Agriculture, Fisheries and Forestry)
  - (b) are of merchantable quality;
  - (c) carry an NLIS device in accordance with State law;
  - (d) in the case where a representation has been made in the pre-sale catalogue that the livestock have particular characteristics or are fit for a particular purpose or market, and such representations are based on information in the NVD, the livestock will have those characteristics or will be fit for the particular purpose or market; and
  - (e) all information in any NVD provided by the vendor is true, complete and correct in all material respects.
28. In the event of a breach by the vendor of the vendor's warranty and provided such breach is notified by the buyer to the agent by 5:00pm on the 7th day after the fall of the hammer then the buyer is not liable to pay the portion of the Price of such of the vendor's livestock to which the breach applies.
29. However if the breach by the vendor is such that the livestock are not rejected outright but are instead downgraded then the buyer will pay the value of the livestock at their next highest and best use.
30. In the case of a breach by the vendor of the vendor's warranty then the vendor will also be liable to the buyer for any further losses which the buyer might establish but the buyer will take all reasonable steps in co-operation with the agent and vendor to mitigate both the effect of the breach and the amount of any loss.
31. Where a sentinel animal of a lot tests positive for chemical residue, or foreign material contamination and provided such test is certified and notified as required by these vendor warranty terms, then:
  - (a) the buyer will be entitled to delay payment for the price of all livestock in that lot only; or
  - (b) the vendor has the option, at the vendor's cost, of collecting the companion animals, if allowed by law; or of having the livestock slaughtered in which event the risk of further condemnations will be that of the vendor. Where product integrity is potentially jeopardised, the Processor has the right to refuse slaughter and send the livestock back to the consigning property at the vendor's cost.
32. The auctioneer is liable to the buyer in respect of any breach of the vendor's warranty arising out of:
  - (a) any error, by the auctioneer, of transcription of information from the NVD completed by the vendor to the pre-sale catalogue or the buyers post-sale summary;
  - (b) any failure by the auctioneer to notify the buyer, prior to bidding, of any breach by the vendor of the warranty of the vendor if the buyer establishes that the agent knew of such breach prior to the sale; and
  - (c) any failure by the auctioneer to announce prior to bidding, or disclose in the pre-sale catalogue, that the vendor has failed to provide a NVD that is complete in all material aspects.

#### **CHAPTER FOUR - OWNERS RISK FOR CONDITION OF CATTLE**

33. This chapter applies only in the case of cattle and their companion animals sold at auction for slaughter when the buyer is the slaughterer and the cattle are transported direct from the sale yard to the meatworks at which they are slaughtered. This chapter does not apply if the buyer is a trader who subsequently resells cattle to a slaughterer. A slaughterer is any person who pays the AMPC Processor levy.
34. Owners risk reflects the producer's responsibility to provide slaughter cattle for sale that are fit for human consumption. Cattle are fit for human consumption if they are not condemned as unfit by DAFF. Owners risk applies if the condemnation is due to a condition in the animal which the buyer establishes, by the DAFF certificate, existed prior to the fall of the hammer.
35. A buyer with the benefit of owners risk protection is not liable to pay the Price of that animal to the vendor. The buyer remains nevertheless liable for all costs incurred after the fall of the hammer in transport, slaughter, testing and disposal of the animal.
36. Owners risk protection is available to the buyer of cattle to which this chapter applies if all of the following are satisfied:
  - (a) a certificate is issued by DAFF which states the relevant NLIS RFID tag number and PIC, the date of the certificate, the reason for condemnation and that the reason for condemnation existed prior to the fall of the hammer;
  - (b) the certificate is received by the selling agent either in its original form or by fax by 5:00pm on the 7th day after the fall of the hammer; and
  - (c) if the condemnation is due to chemical residue the certificate follows testing in a DAFF approved laboratory which establishes maximum residue limits in excess of the Australian limit.
37. Owners risk does not apply, and the buyer must pay for the cattle, if the reason for condemnation is any of the following:
  - (a) bruising,
  - (b) fever,
  - (c) partial condemnation, or
  - (d) emaciation.

#### **CHAPTER FIVE - NOTICES REQUIRED BY STATE LEGISLATION**

##### NSW Legislation

Property, Stock and Business Agents Act 2002 Warnings

Penalties for collusive practices. It is an offence against the Property, Stock and Business Agents Act 2002 for a person to do any of the following as a result of a collusive practice, or to induce or attempt to induce another person by a collusive practice to do any of the following:

- (i) to abstain from bidding; or
- (ii) to bid to a limited extent only; or
- (iii) to do any other act that might prevent free and open competition. Severe penalties may be imposed on persons convicted of collusive practices.

The auctioneer has the right to make one bid on behalf of the vendor if the auctioneer clearly and precisely announces that fact prior to the sale.

##### Tasmanian Legislation

An auctioneer conducting a public auction must not appear to acknowledge the making of a bid if no bid was made. A person must not participate in collusive practices by way of making or receiving an unlawful promise to abstain from bidding, not to bid except to a limited extent or do any other thing which may prevent free and open competition.

##### Western Australian Legislation

Auction Sales Act 1973 s31 NOTICE. It is an offence to:

- (i) induce or attempt to induce another person to abstain from bidding by means of a promise, expressed or implied, that the other person will have the right to elect to take over as buyer or to toss or draw lots to establish who is to become the owner;
- (ii) abstain or agree to abstain from bidding as a result of such a promise;
- (iii) knowingly enter or permit or cause to be entered in the auctioneer's record any name other than that of the actual successful bidder;
- (iv) enter in the auctioneer's record the name of the buyer other than that of the actual successful bidder; or
- (v) in the case of successful bidder supply wrong information as to the name of the buyer to the auctioneer or to any person, firm or corporation on whose behalf the sale is conducted.

The vendor, or any person on behalf of the vendor, or the auctioneer have the right to make no more than three bids.

[illegible]

[illegible]



**Stockfeed Mills  
Lismore and Winderera  
Have all your Cattle Needs**

**Proudly Supporting the  
'Power of Red Sale'**



**BULK DELIVERIES & BULKA BAGS AVAILABLE  
ALSO ASK YOUR GOLDMIX MILL ABOUT  
A CUSTOM DIET FOR YOUR HERD**

**Goldmix Lismore - 15 Krauss Ave, Sth Lismore NSW  
Phone: 02 6621 3042**

**Goldmix Winderera - 2814 Murgon Gayndah Rd, Winderera QLD  
Phone: 07 4168 6186**



**Norco - an Australian, farmer owned  
dairy co-operative since 1895**

# GET GEARED UP FOR HAY



**CASE IH**  
AGRICULTURE

*Get ahead of the game and secure a  
Maxxum, Puma or Optum Tractor today.*

**3 YEAR / 3000** from **2.40%**  
**EXTENDED**  
**WARRANTY**

Terms and conditions apply. Finance options provided by CNH Industrial Capital Australia Pty Limited (AFSL 286664) to approved business applicants. "From 2.40%" rate subject to deposit and repayment schedule. Available on selected new Case IH MAXXUM and PUMA TRACTORS until 31 October 2017, or while stocks last.

 **WIDELAND**  
AG AND CONSTRUCTION

Dalby	07 4662 3111	Narromine	02 6889 1100
Gilgandra	02 6847 8100	Tamworth	02 6765 5552
Gunnedah	02 6743 0700	Toowoomba	07 4633 1150



Like us on  
**Facebook**

**Phone 1300 783 379**

**WidelandAgConstruction**

**[www.widelandag.com.au](http://www.widelandag.com.au)**